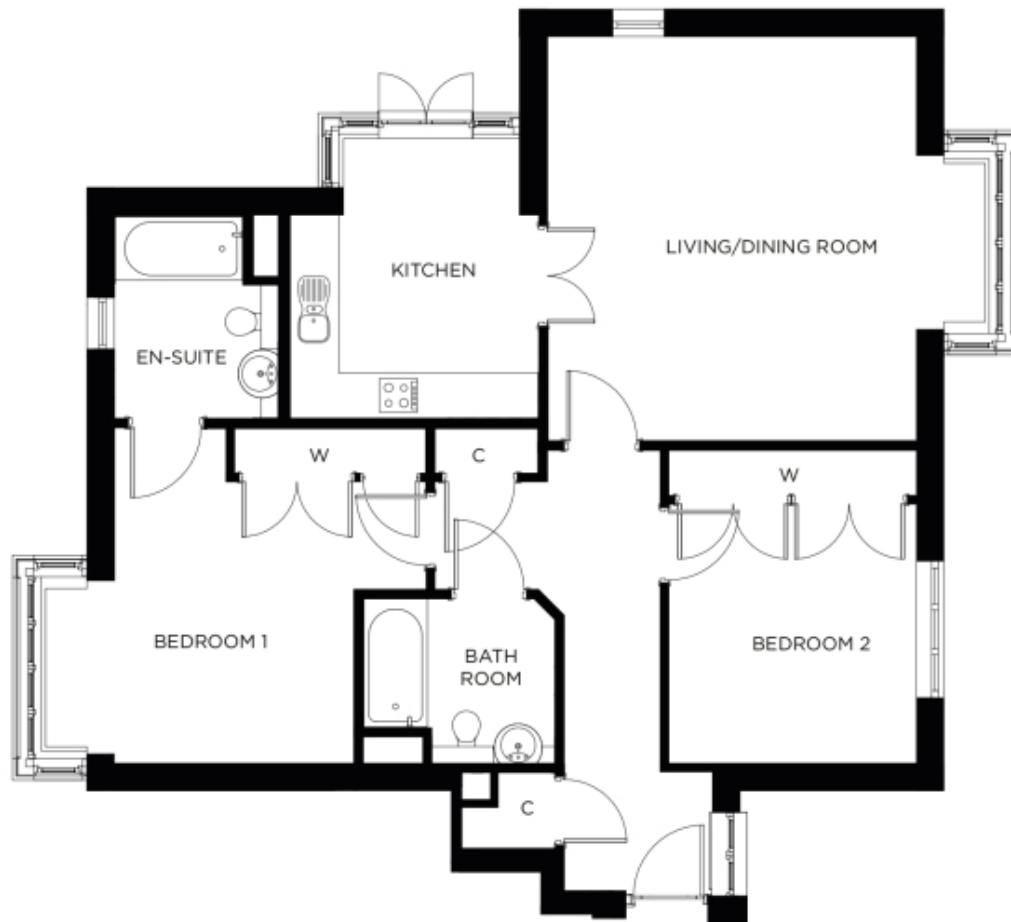


# 1 Chapman House

A beautiful modern home



Price: £574,000\*, Ground floor

This spacious apartment comes with flexible open plan living space, a fully equipped kitchen and two generous double-bedrooms - one with en-suite bathroom. A separate bathroom makes this the perfect apartment to accommodate family and friends.

\* other charges apply

Internal measurements: 1,082sq ft

|                    |                  |                 |
|--------------------|------------------|-----------------|
| Kitchen            | 11' 3" x 8' 11"  | 3,420 x 2,700mm |
| Living/Dining Room | 17' 8" x 16' 2"  | 5,370 x 4,910mm |
| Bedroom 1          | 14' 11" x 13' 7" | 4,540 x 4,140mm |
| Ensuite            | 8' 11" x 6' 9"   | 2,700 x 2,050mm |
| Bedroom 2          | 11' 4" x 10' 10" | 3,440 x 3,290mm |
| Bathroom           | 8' 0" x 6' 9"    | 2,430 x 2,050mm |

Apart from the fixtures and fittings described, the homes are unfurnished.

\* Based on a 125-year lease, and subject to service charge, event fees and ground rent. Please ask for further information.

Version 3 - 19/10/2018





PLEASE NOTE: Images are for illustrative purposes only. Rooms shown may not be representative of this property.