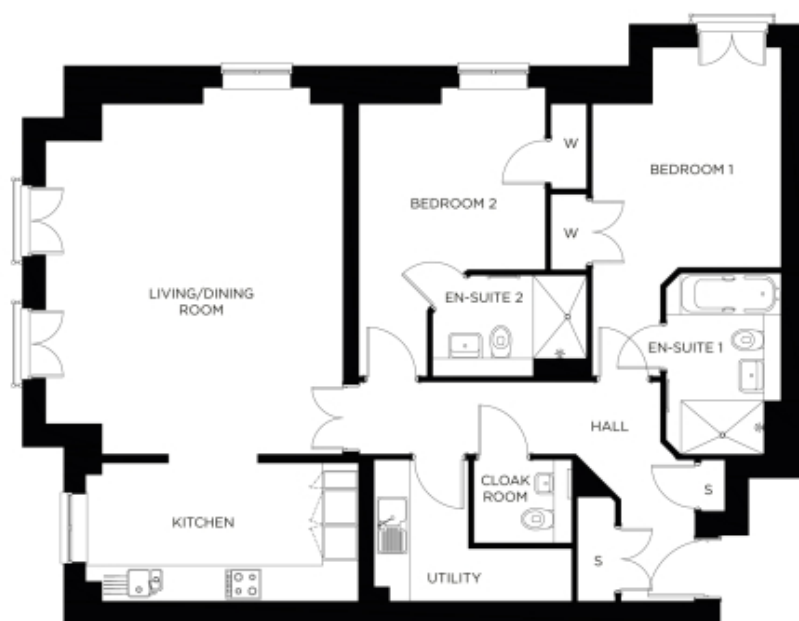


97 Great Alne Park

A beautiful modern home



Price: £POA*, Second floor

Boasting impressive views over the feature garden and landscaped grounds, Austin House occupies a prominent position â “ hard to miss as you enter the village. The buildingâ™s architecture is inspired by that of the local area and offers a variety of spacious two bedroom apartments complete with ensuites to the master bedrooms.

* other charges apply

Apart from the fixtures and fittings described, the homes are unfurnished.

* Based on a 125-year lease, and subject to service charge, event fees and ground rent. Please ask for further information.

Version 3 - 19/10/2018

Internal measurements: 1,086sq ft

Kitchen	15' 0" x 7' 7"	4,550 x 2,310mm
Living/Dining	13' 3" x 19' 3"	4,020 x 5,850mm
Bedroom 1	10' 5" x 12' 1"	3,150 x 3,660mm
Bedroom 2	10' 3" x 9' 0"	3,100 x 2,740mm



PLEASE NOTE: Images are for illustrative purposes only, Rooms shown may not be representative of this property.