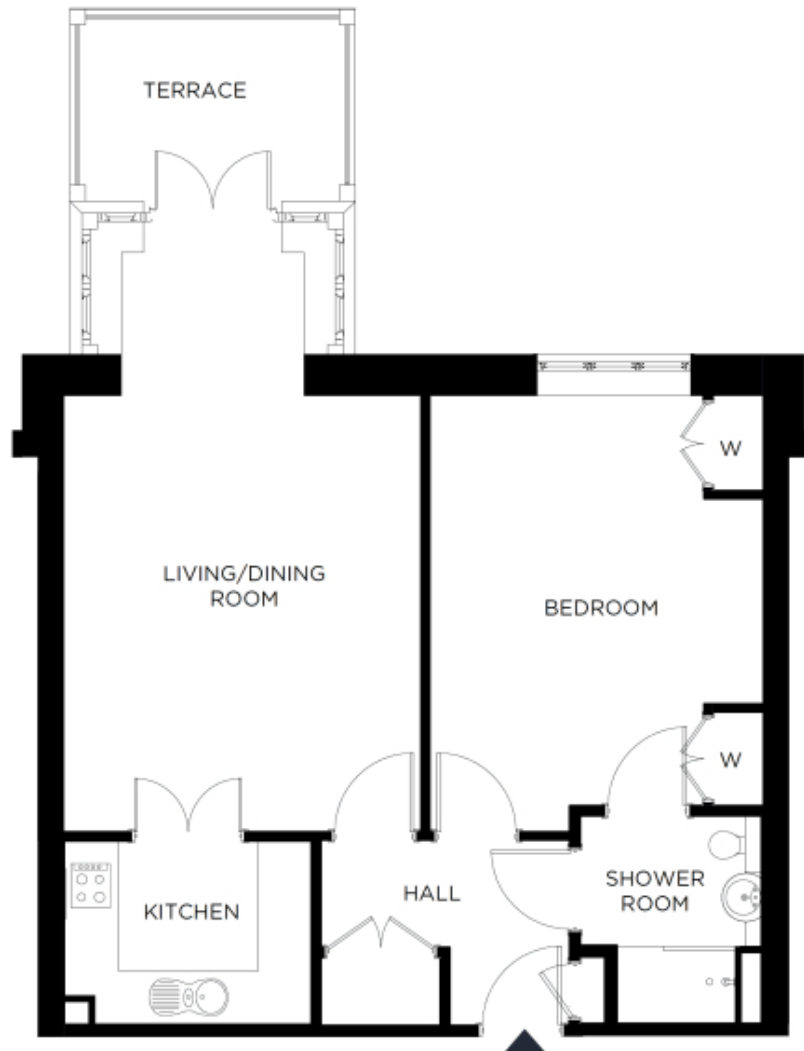


# 23 The Grange

A beautiful modern home



Price: £429,000\* , Upper ground floor Internal measurements: 693sq ft

Our spacious one and two-bedroom retirement living apartments offer the perfect balance of style and function, centrally located to ensure easy access to our village facilities.

\* other charges apply

Kitchen	9' 7" x 7' 1"	2,900 x 2,145mm
Living	14' 1" x 22' 5"	4,284 x 6,816mm
Bedroom 1	16' 10" x 12' 10"	5,129 x 3,897mm
Ensuite 1	7' 0" x 8' 0"	2,126 x 2,430mm
Patio	11' 10" x 8' 5"	3,590 x 2,545mm

Apart from the fixtures and fittings described, the homes are unfurnished.

\* Based on a 125-year lease, and subject to service charge, event fees and ground rent. Please ask for further information.

Version 3 - 19/10/2018



PLEASE NOTE: Images are for illustrative purposes only. Rooms shown may not be representative of this property.