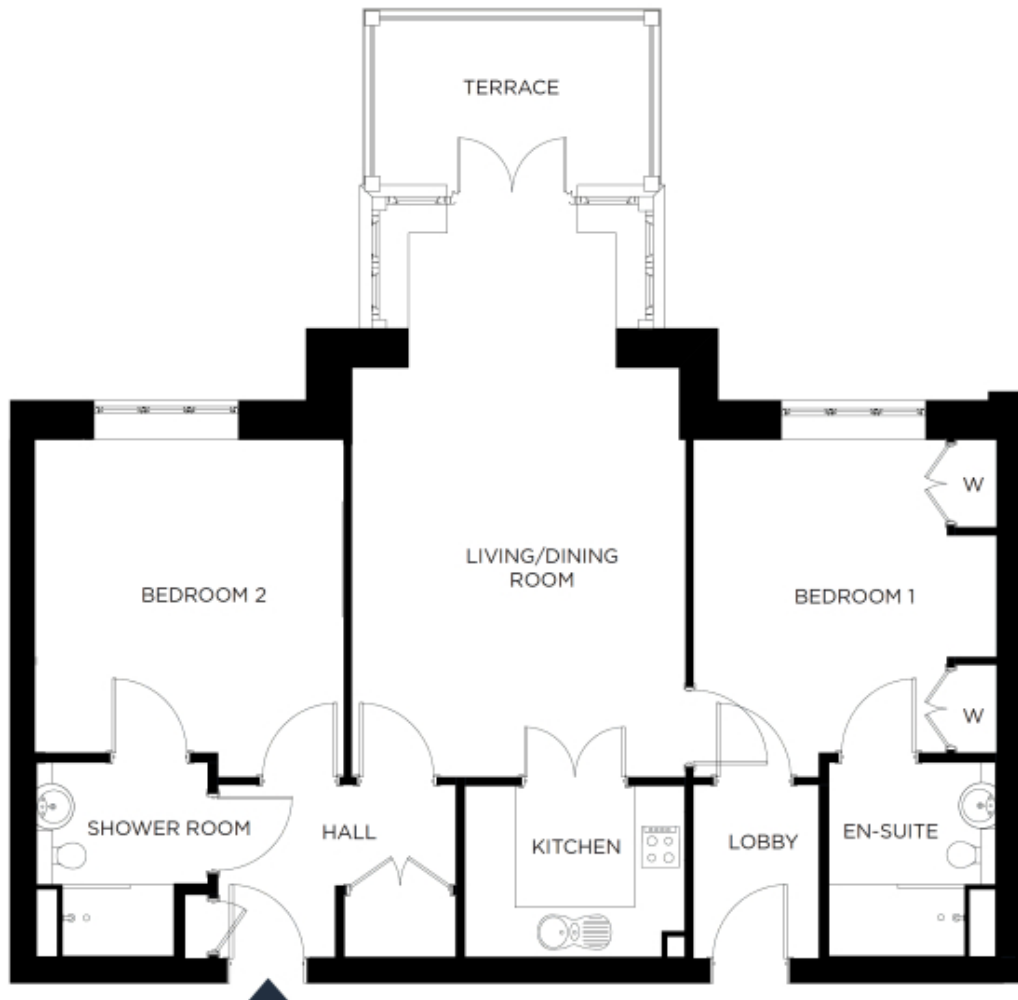


# 3 The Grange

A beautiful modern home



Price: £572,000\*, Upper ground floor Internal measurements: 936sq ft

Our spacious one and two-bedroom retirement living apartments offer the perfect balance of style and function, centrally located to ensure easy access to our village facilities.

\* other charges apply

Kitchen	7' 1" x 9' 1"	2,150 x 2,765mm
Living	13' 9" x 22' 5"	4,182 x 6,816mm
Bedroom 1	12' 4" x 13' 11"	3,734 x 4,229mm
Bedroom 2	12' 10" x 13' 11"	3,897 x 4,229mm
Ensuite 1	7' 1" x 8' 0"	2,155 x 2,430mm
Ensuite 2	7' 0" x 8' 0"	2,130 x 2,434mm
Patio	7' 9" x 10' 9"	2,345 x 3,270mm

Apart from the fixtures and fittings described, the homes are unfurnished.

\* Based on a 125-year lease, and subject to service charge, event fees and ground rent. Please ask for further information.

Version 3 - 19/10/2018



PLEASE NOTE: Images are for illustrative purposes only. Rooms shown may not be representative of this property.