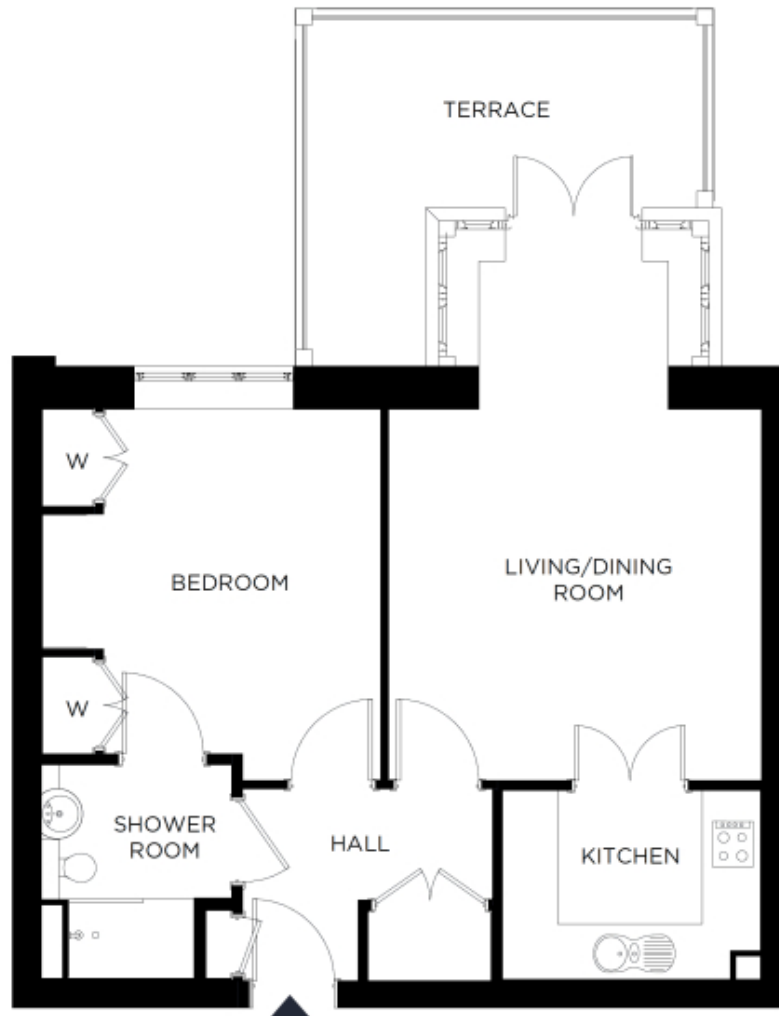


9 The Grange

A beautiful modern home



Price: £384,000*, Upper ground floor Internal measurements: 606sq ft

Our spacious one and two-bedroom retirement living apartments offer the perfect balance of style and function, centrally located to ensure easy access to our village facilities.

* other charges apply

Kitchen	9' 8" x 7' 1"	2,935 x 2,145mm
Living	13' 11" x 19' 5"	4,219 x 5,916mm
Bedroom 1	13' 11" x 12' 8"	4,229 x 3,857mm
Ensuite 1	7' 1" x 8' 0"	2,140 x 2,434mm
Patio	15' 1" x 17' 8"	4,595 x 5,375mm

Apart from the fixtures and fittings described, the homes are unfurnished.

* Based on a 125-year lease, and subject to service charge, event fees and ground rent. Please ask for further information.

Version 3 - 19/10/2018



PLEASE NOTE: Images are for illustrative purposes only. Rooms shown may not be representative of this property.