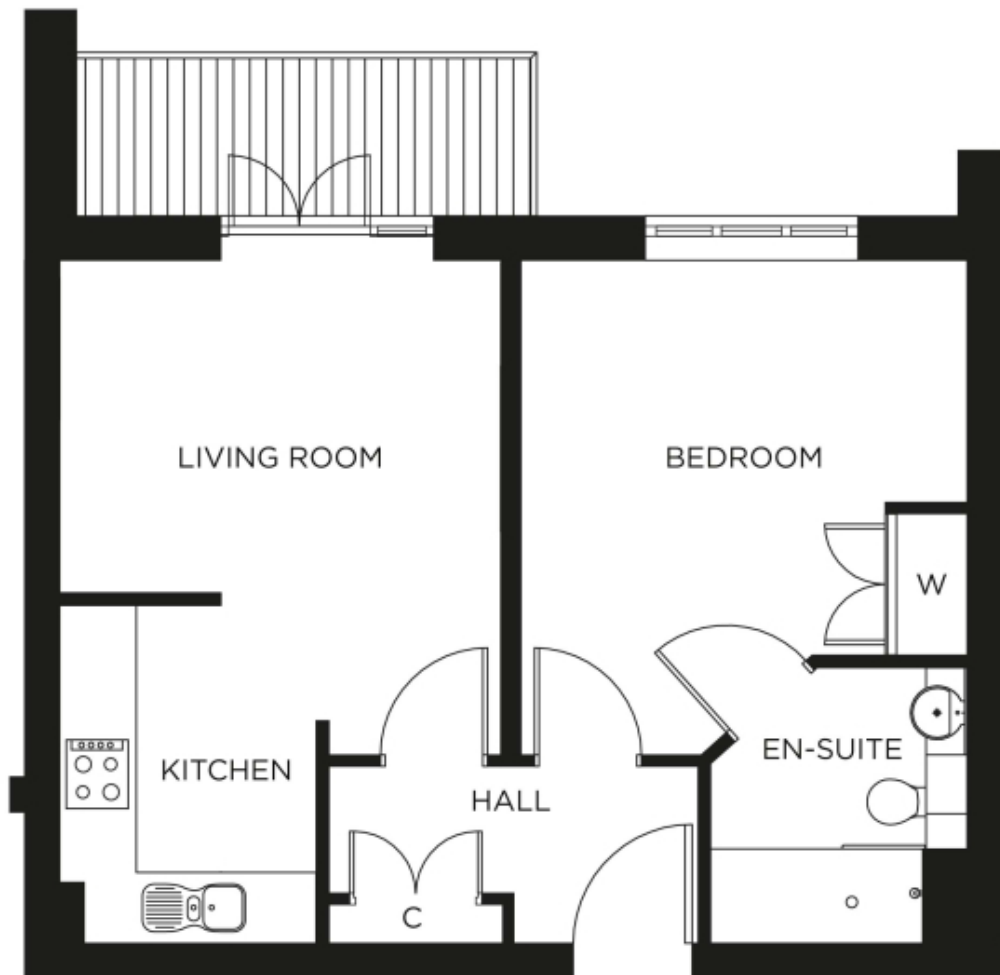


# 26 The Grange



Price: £250,000\*, First floor

Internal measurements: 481sq ft

\* other charges apply

Living Room	11' 1" x 12' 6"	3,355 x 3,793mm
Kitchen	7' 9" x 7' 2"	2,340 x 2,180mm
Bedroom	11' 1" x 12' 6"	3,355 x 3,793mm
En-suite	7' 9" x 7' 2"	2,340 x 2,180mm

Apart from the fixtures and fittings described, the homes are unfurnished.

\* Based on a 125-year lease, and subject to service charge, event fees and ground rent. Please ask for further information.

Version 3 - 19/10/2018



PLEASE NOTE: Images are for illustrative purposes only. Rooms shown may not be representative of this property.