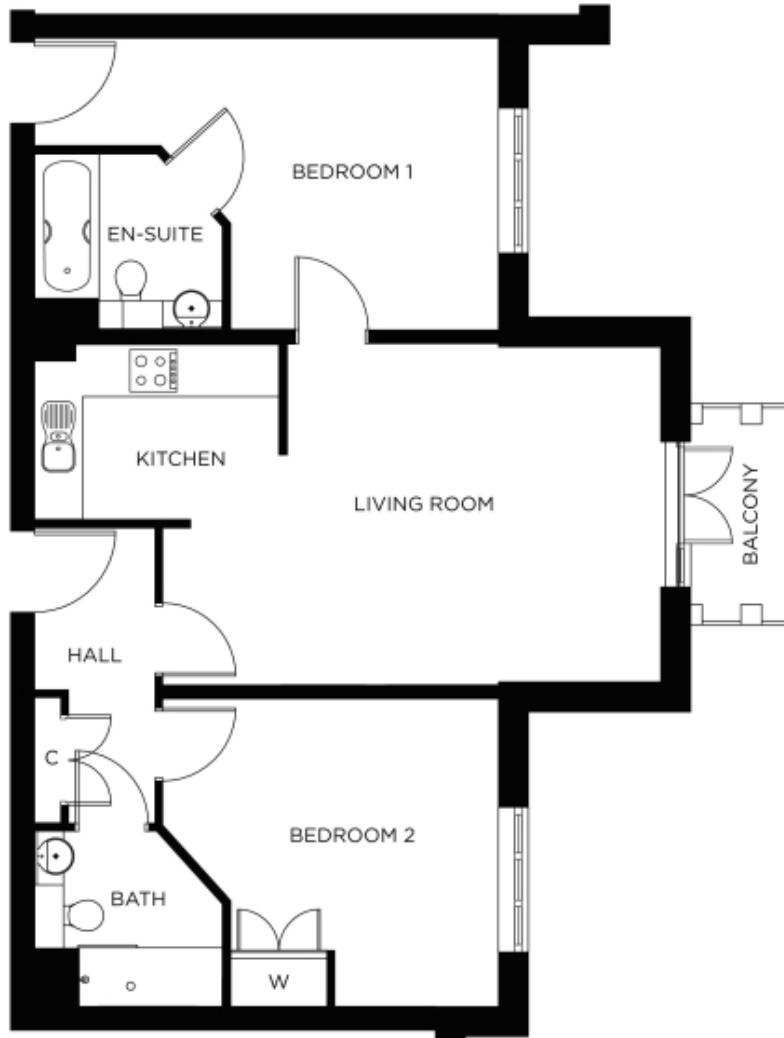


32 The Grange



Price: £435,000*, First floor

Internal measurements: 844sq ft

* other charges apply

Living Room	17' 8" x 13' 9"	5,365 x 4,178mm
Kitchen	7' 9" x 7' 2"	2,340 x 2,180mm
Bedroom 1	11' 0" x 12' 0"	3,340 x 3,642mm
En-suite	7' 9" x 7' 2"	2,340 x 2,180mm
Bedroom 2	13' 9" x 12' 8"	4,190 x 3,837mm
Bathroom	7' 9" x 7' 2"	2,340 x 2,180mm

Apart from the fixtures and fittings described, the homes are unfurnished.

* Based on a 125-year lease, and subject to service charge, event fees and ground rent. Please ask for further information.

Version 3 - 19/10/2018



PLEASE NOTE: Images are for illustrative purposes only. Rooms shown may not be representative of this property.