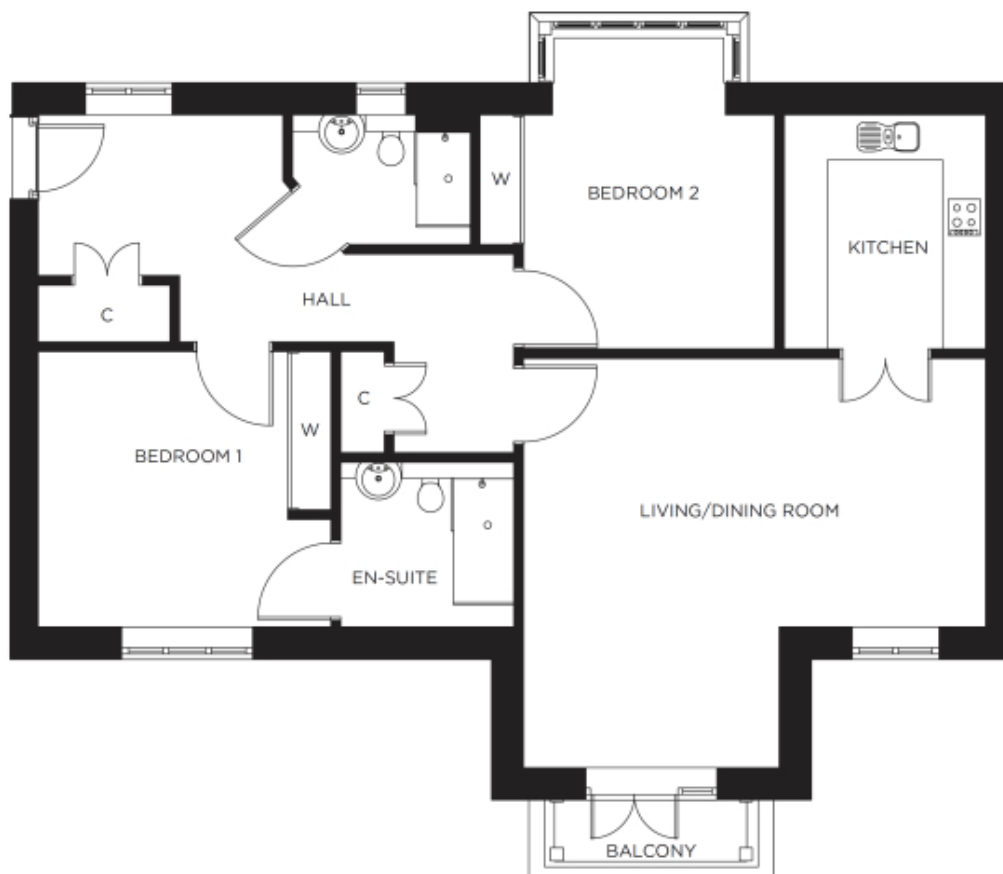


# 6 Wise Manor

A beautiful modern home



Price: £450,000\*, First floor

This beautiful apartment features a versatile open plan living space adjacent to the fully-equipped kitchen. An en-suite master bedroom is supplemented by a second double-bedroom and separate bathroom, giving the flexibility to entertain guests all year round.

\* other charges apply

Internal measurements: 1,103sq ft

Sitting/Dining	21' 1" x 18' 5"	6,401 x 5,613mm
Kitchen	9' 2" x 10' 7"	2,781 x 3,206mm
Bathroom	8' 1" x 5' 11"	2,457 x 1,792mm
Bedroom 1	13' 4" x 12' 5"	4,047 x 3,775mm
Ensuite	7' 10" x 7' 5"	2,385 x 2,258mm
Bedroom 2	13' 5" x 14' 0"	4,068 x 4,262mm

Apart from the fixtures and fittings described, the homes are unfurnished.

\* Based on a 125-year lease, and subject to service charge, event fees and ground rent. Please ask for further information.

Version 3 - 19/10/2018





PLEASE NOTE: Images are for illustrative purposes only. Rooms shown may not be representative of this property.