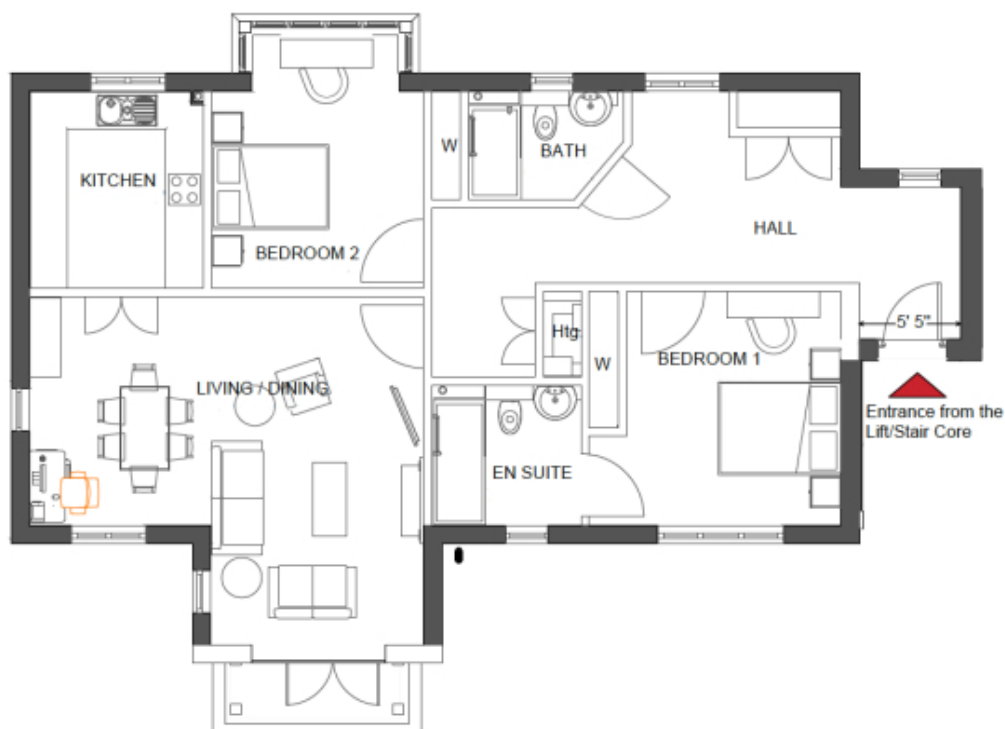


# 4 Morecombe Lodge

A beautiful modern home



Price: £470,000\*, First floor

This beautiful apartment features a versatile open plan living space adjacent to the fully-equipped kitchen. An en-suite master bedroom is supplemented by a second double-bedroom and separate bathroom, giving the flexibility to entertain guests all year round.

\* other charges apply

Internal measurements: 1,129sq ft

Sitting /Dining	20' 11" x 18' 5"	6,360 x 5,607mm
Kitchen	9' 3" x 10' 6"	2,798 x 3,186mm
Bathroom	8' 3" x 5' 10"	2,495 x 1,755mm
Bedroom 1	13' 5" x 12' 5"	4,067 x 3,776mm
Ensuite	7' 11" x 7' 5"	2,413 x 2,258mm
Bedroom 2	13' 3" x 13' 6"	4,027 x 4,091mm

Apart from the fixtures and fittings described, the homes are unfurnished.

\* Based on a 125-year lease, and subject to service charge, event fees and ground rent. Please ask for further information.

Version 3 - 19/10/2018



PLEASE NOTE: Images are for illustrative purposes only. Rooms shown may not be representative of this property.