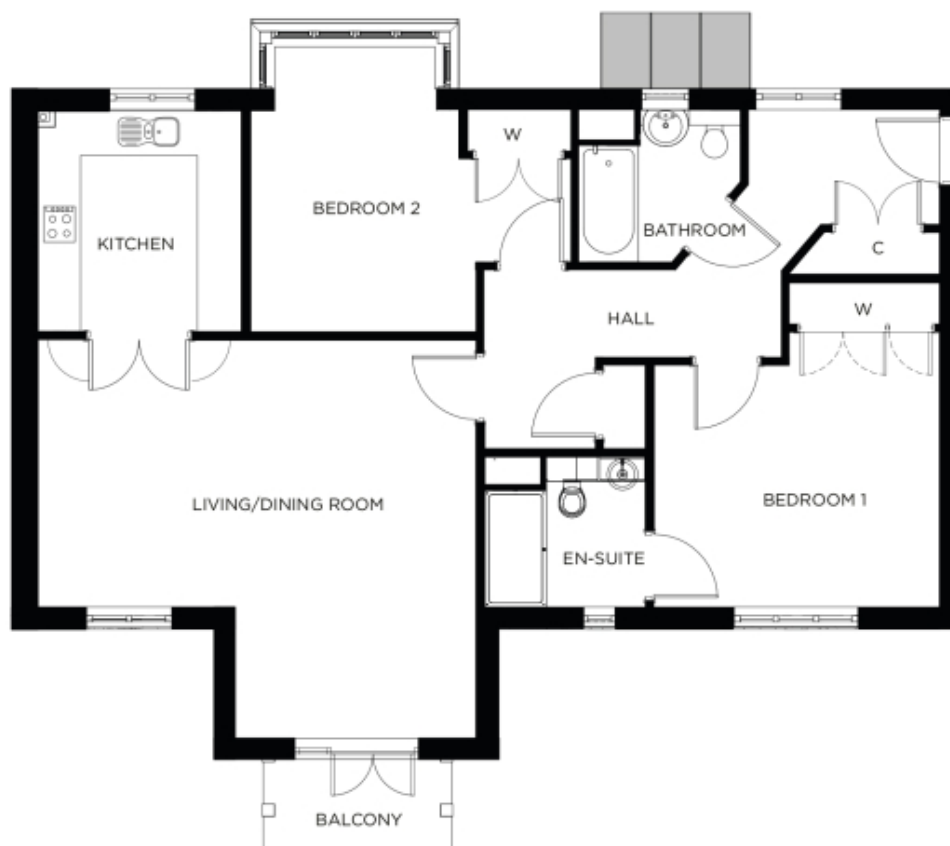


# 6 Bishops Manor

A beautiful modern home



Price: £585,000\*, First floor

This beautiful apartment features a versatile open plan living space adjacent to the fully-equipped kitchen. An en-suite master bedroom is supplemented by a second double-bedroom and separate bathroom, giving the flexibility to entertain guests all year round.

\* other charges apply

Internal measurements: 1,150sq ft

Kitchen	10' 8" x 9' 11"	3,240 x 3,000mm
Living/Dining Room	21' 2" x 19' 1"	6,440 x 5,810mm
Bedroom 1	13' 3" x 13' 3"	4,030 x 4,020mm
Ensuite	8' 0" x 6' 9"	2,430 x 2,050mm
Bedroom 2	15' 4" x 10' 8"	4,660 x 3,250mm
Bathroom	8' 0" x 7' 4"	2,430 x 2,220mm

Apart from the fixtures and fittings described, the homes are unfurnished.

\* Based on a 125-year lease, and subject to service charge, event fees and ground rent. Please ask for further information.

Version 3 - 19/10/2018





PLEASE NOTE: Images are for illustrative purposes only. Rooms shown may not be representative of this property.