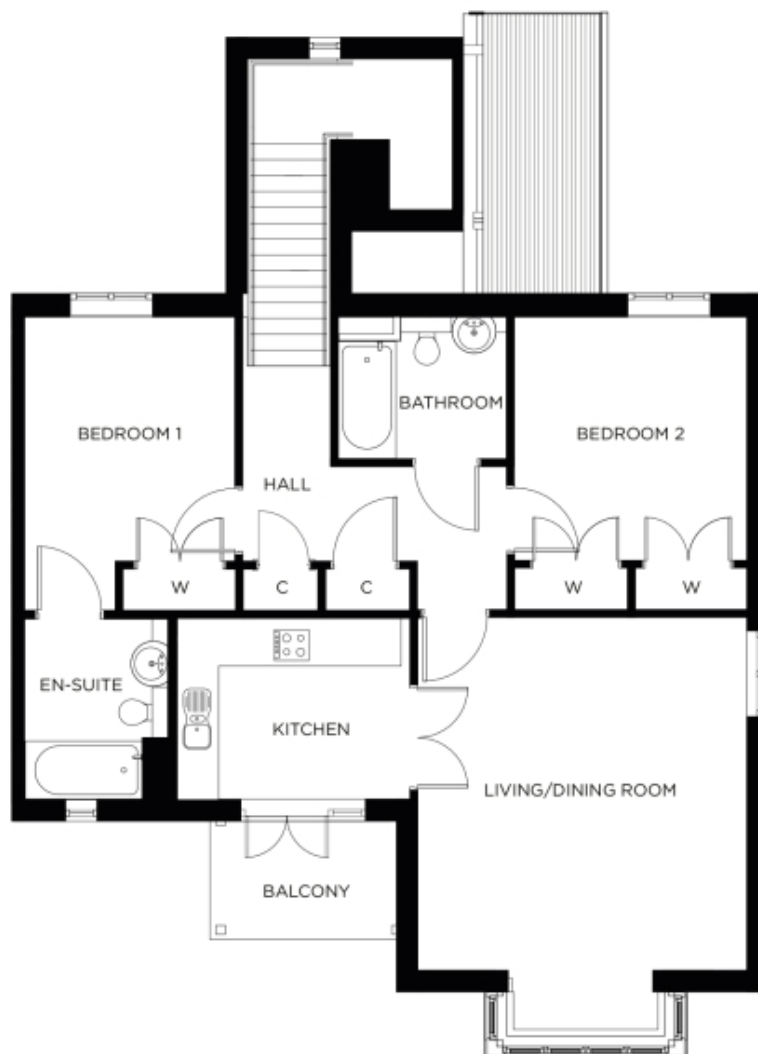


# 2 Lock House

A beautiful modern home



Price: £520,000\*, First floor

This spacious apartment comes with flexible open plan living space, a fully equipped kitchen and two generous double-bedrooms - one with en-suite bathroom. A separate bathroom makes this the perfect apartment to accommodate family and friends.

\* other charges apply

Internal measurements: 986sq ft

Kitchen	11' 3" x 8' 8"	3,410 x 2,630mm
Living/Dining Room	16' 9" x 15' 9"	5,100 x 4,790mm
Bedroom 1	14' 1" x 10' 1"	4,290 x 3,050mm
Ensuite	8' 8" x 6' 9"	2,630 x 2,050mm
Bedroom 2	11' 9" x 11' 1"	3,580 x 3,370mm
Bathroom	8' 1" x 6' 9"	2,440 x 2,050mm

Apart from the fixtures and fittings described, the homes are unfurnished.

\* Based on a 125-year lease, and subject to service charge, event fees and ground rent. Please ask for further information.

Version 3 - 19/10/2018



PLEASE NOTE: Images are for illustrative purposes only. Rooms shown may not be representative of this property.