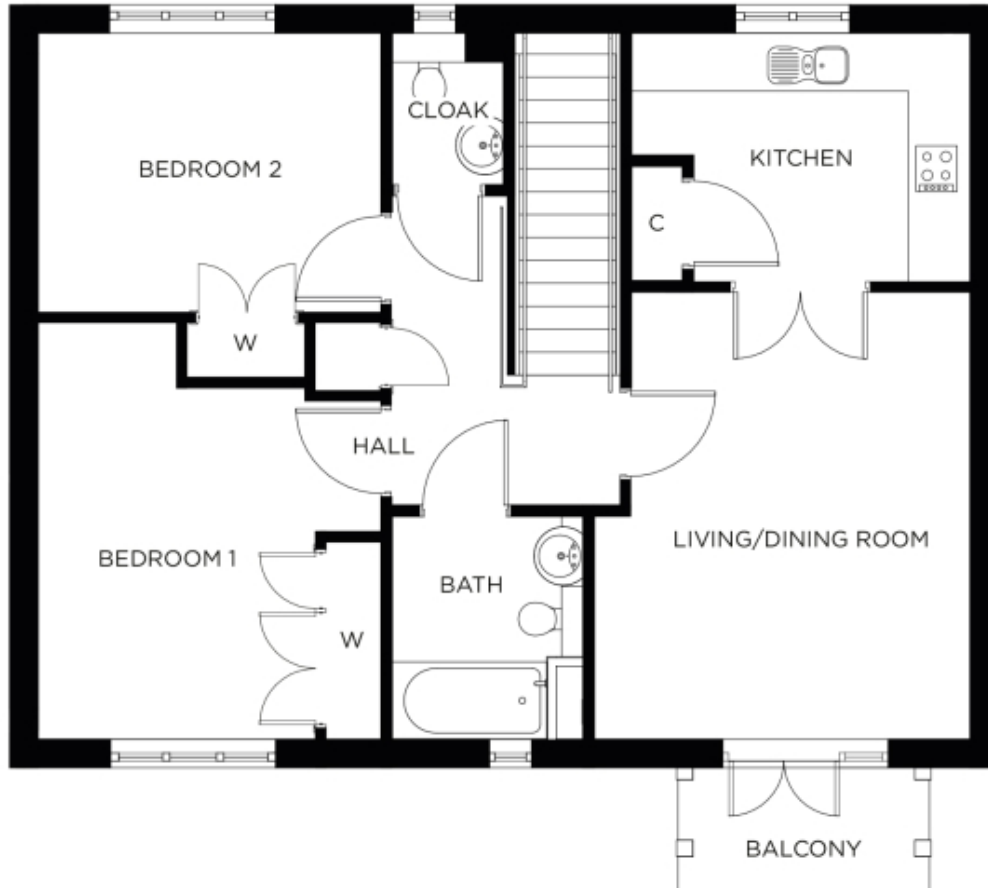


4 Lock House

A beautiful modern home



Price: £POA*, First floor

A comfortable home with well-planned proportions. The generous double-bedroom and stand-alone bathroom sit opposite a traditional living space and fully-equipped kitchen. Clever design and natural light ensure this home makes the most of its space and because it comes with everything you need, you can move straight in.

* other charges apply

Apart from the fixtures and fittings described, the homes are unfurnished.

* Based on a 125-year lease, and subject to service charge, event fees and ground rent. Please ask for further information.

Version 3 - 19/10/2018

Internal measurements: 831sq ft

| | | |
|--------------------|-----------------|-----------------|
| Kitchen | 12' 2" x 9' 0" | 3,700 x 2,720mm |
| Living/Dining Room | 16' 1" x 13' 7" | 4,890 x 4,140mm |
| Bedroom 1 | 15' 0" x 12' 4" | 4,550 x 3,750mm |
| Bedroom 2 | 12' 4" x 10' 1" | 3,750 x 3,050mm |
| Bathroom | 8' 0" x 6' 9" | 2,430 x 2,050mm |
| Cloak Room | 5' 3" x 4' 0" | 1,600 x 1,210mm |



PLEASE NOTE: Images are for illustrative purposes only. Rooms shown may not be representative of this property.