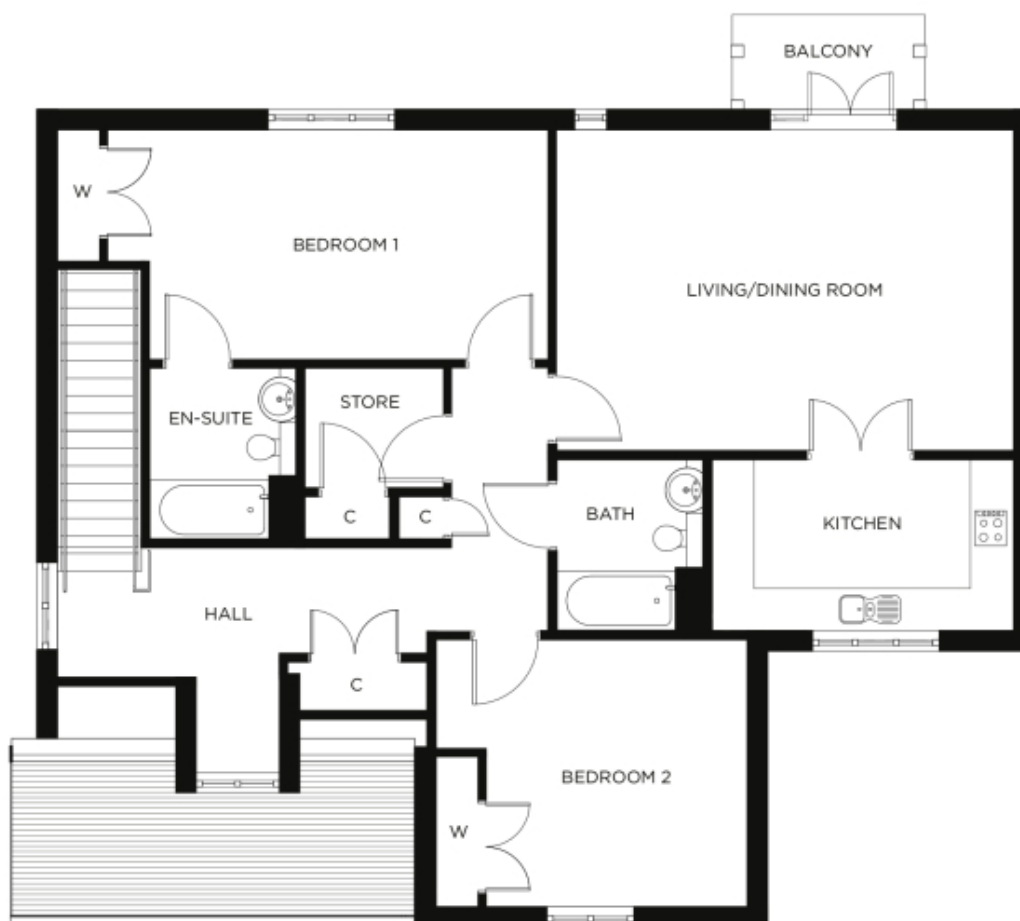


# 6 Lock House

A beautiful modern home



Price: £606,000\*, First floor

This exceptional apartment features a self-contained kitchen that's accessible from both the hallway and the large open-plan living area. Two large double bedrooms (one en-suite) and a separate bathroom are complemented by ample storage space throughout.

\* other charges apply

Internal measurements: 1,307sq ft

Kitchen	14' 3" x 8' 1"	4,320 x 2,440mm
Living/Dining Room	21' 5" x 15' 2"	6,520 x 4,600mm
Bedroom 1	20' 8" x 10' 10"	6,290 x 3,280mm
Ensuite	8' 0" x 6' 9"	2,430 x 2,050mm
Bedroom 2	14' 9" x 12' 7"	4,490 x 3,821mm
Bathroom	8' 0" x 6' 9"	2,430 x 2,050mm

Apart from the fixtures and fittings described, the homes are unfurnished.

\* Based on a 125-year lease, and subject to service charge, event fees and ground rent. Please ask for further information.

Version 3 - 19/10/2018



PLEASE NOTE: Images are for illustrative purposes only. Rooms shown may not be representative of this property.