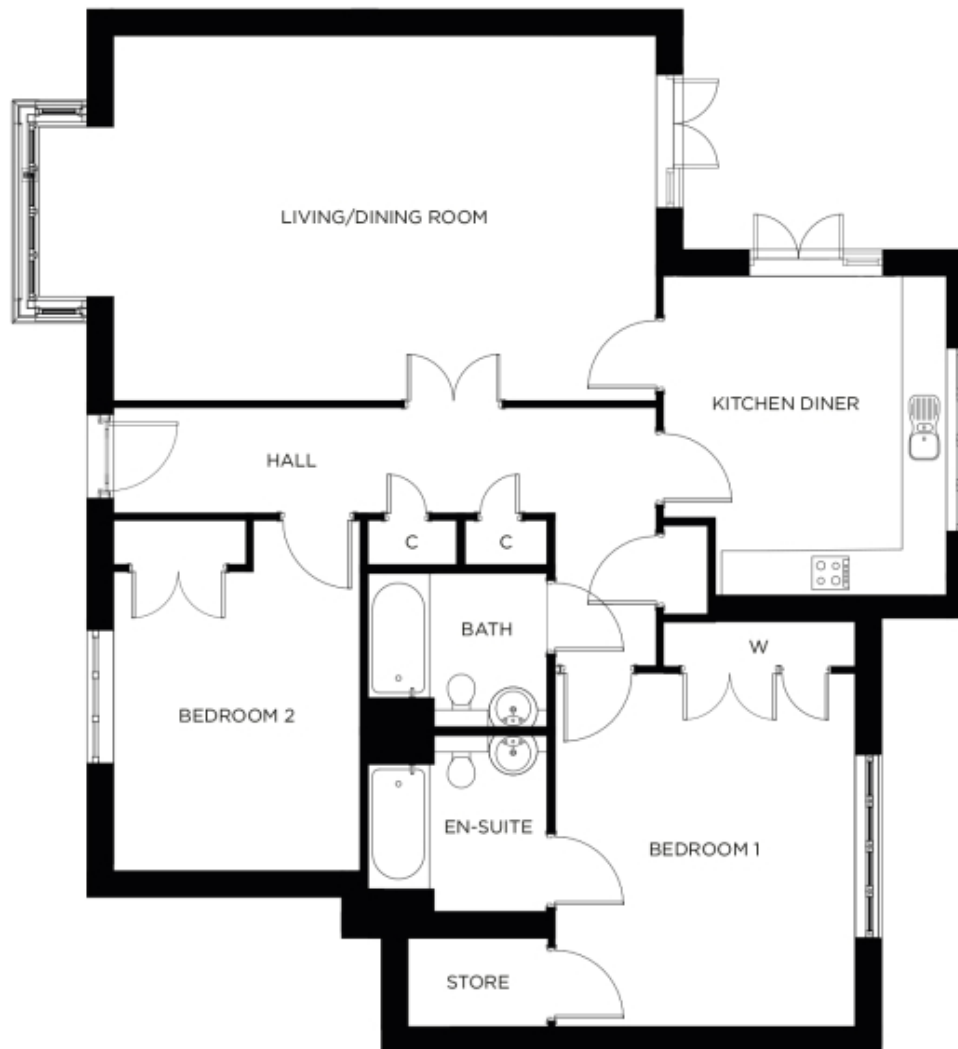


# 3 Wood Priory

A beautiful modern home



Price: £POA\*, Ground floor

Internal measurements: 1,362sq ft

This exceptional apartment features a self-contained kitchen that's accessible from both the hallway and the large open-plan living area. Two large double bedrooms (one en-suite) and a separate bathroom are complemented by ample storage space throughout.

\* other charges apply

Kitchen	14' 3" x 12' 7"	4,340 x 3,820mm
Living/Dining Room	24' 3" x 16' 3"	7,380 x 4,930mm
Bedroom 1	15' 9" x 13' 4"	4,790 x 4,060mm
Ensuite	8' 0" x 7' 10"	2,430 x 2,370mm
Bedroom 2	15' 6" x 11' 0"	4,700 x 3,340mm
Bathroom	8' 0" x 6' 9"	2,430 x 2,050mm

Apart from the fixtures and fittings described, the homes are unfurnished.

\* Based on a 125-year lease, and subject to service charge, event fees and ground rent. Please ask for further information.

Version 3 - 19/10/2018



PLEASE NOTE: Images are for illustrative purposes only. Rooms shown may not be representative of this property.