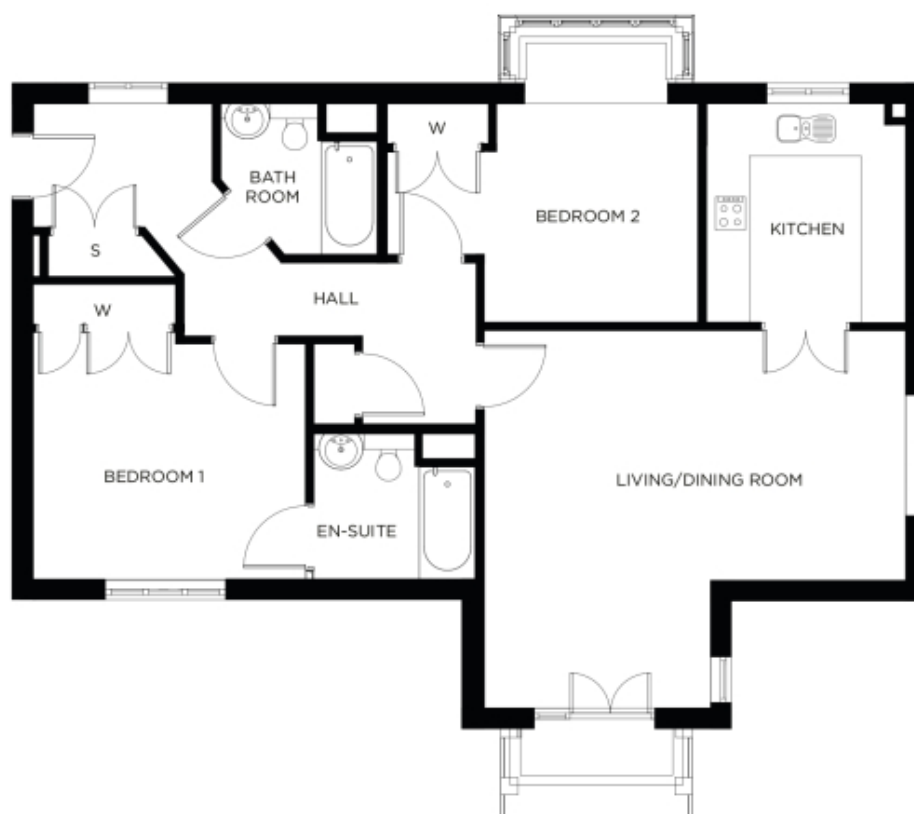


# 4 Tate Manor

A beautiful modern home



Price: £552,000\*, First floor

This beautiful apartment features a versatile open plan living space adjacent to the fully-equipped kitchen. An en-suite master bedroom is supplemented by a second double-bedroom and separate bathroom, giving the flexibility to entertain guests all year round.

\* other charges apply

Internal measurements: 1,106sq ft

Kitchen	10' 10" x 9' 10"	3,290 x 2,980mm
Living/Dining Room	18' 8" x 20' 11"	5,670 x 6,370mm
Bedroom 1	13' 4" x 12' 3"	4,050 x 3,730mm
Ensuite	7' 10" x 6' 9"	2,370 x 2,050mm
Bedroom 2	15' 6" x 10' 10"	4,700 x 3,290mm
Bathroom	8' 0" x 6' 9"	2,430 x 2,050mm

Apart from the fixtures and fittings described, the homes are unfurnished.

\* Based on a 125-year lease, and subject to service charge, event fees and ground rent. Please ask for further information.

Version 3 - 19/10/2018



PLEASE NOTE: Images are for illustrative purposes only. Rooms shown may not be representative of this property.