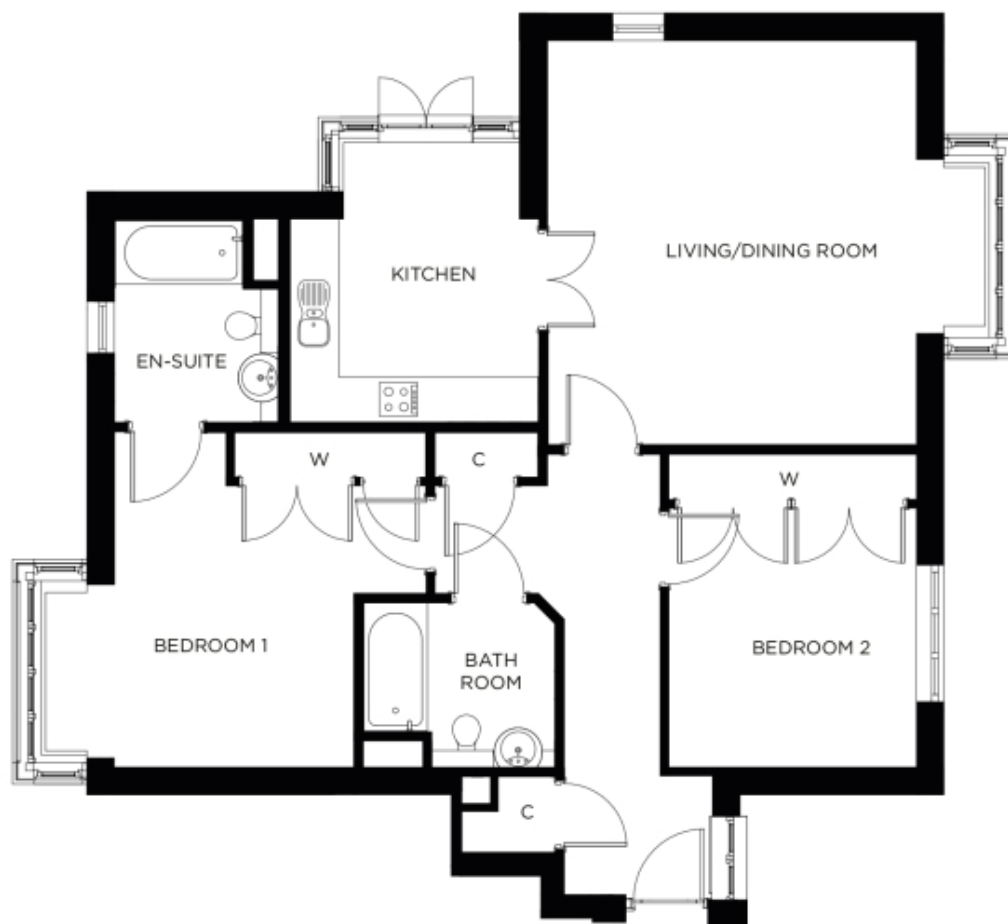


# 1 Chapman House

A beautiful modern home



Price: £574,000\*, Ground floor

This spacious apartment comes with flexible open plan living space, a fully equipped kitchen and two generous double-bedrooms - one with en-suite bathroom. A separate bathroom makes this the perfect apartment to accommodate family and friends.

\* other charges apply

Internal measurements: 1,082sq ft

Kitchen	11' 3" x 8' 11"	3,420 x 2,700mm
Living/Dining Room	17' 8" x 16' 2"	5,370 x 4,910mm
Bedroom 1	14' 11" x 13' 7"	4,540 x 4,140mm
Ensuite	8' 11" x 6' 9"	2,700 x 2,050mm
Bedroom 2	11' 4" x 10' 10"	3,440 x 3,290mm
Bathroom	8' 0" x 6' 9"	2,430 x 2,050mm

Apart from the fixtures and fittings described, the homes are unfurnished.

\* Based on a 125-year lease, and subject to service charge, event fees and ground rent. Please ask for further information.

Version 3 - 19/10/2018





PLEASE NOTE: Images are for illustrative purposes only. Rooms shown may not be representative of this property.