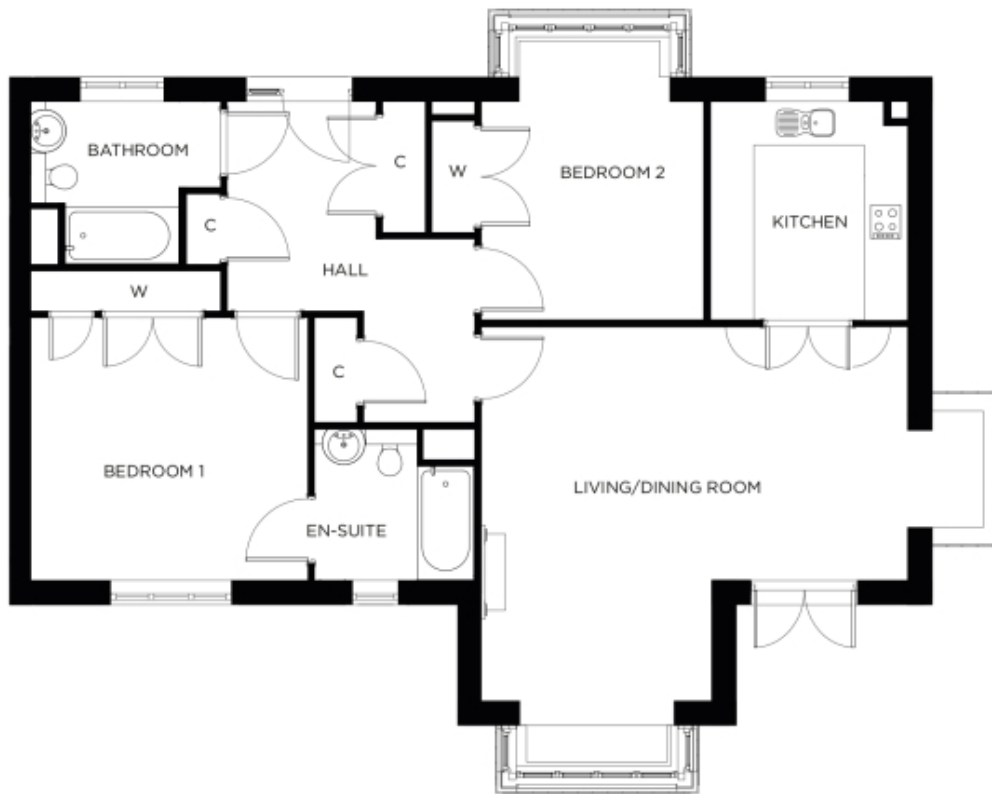


1 Saunders Mews

A beautiful modern home



Price: £584,000*, Ground floor

This beautiful apartment features a versatile open plan living space adjacent to the fully-equipped kitchen. An en-suite master bedroom is supplemented by a second double-bedroom and separate bathroom, giving the flexibility to entertain guests all year round.

* other charges apply

Internal measurements: 1,147sq ft

Kitchen	9' 9" x 10' 9"	2,960 x 3,270mm
Living/Dining Room	20' 11" x 18' 4"	6,370 x 5,570mm
Bedroom 1	13' 3" x 12' 10"	4,030 x 3,890mm
Ensuite	8' 0" x 6' 9"	2,430 x 2,050mm
Bedroom 2	10' 10" x 10' 9"	3,290 x 3,270mm
Bathroom	9' 3" x 8' 0"	2,800 x 2,430mm

Apart from the fixtures and fittings described, the homes are unfurnished.

* Based on a 125-year lease, and subject to service charge, event fees and ground rent. Please ask for further information.

Version 3 - 19/10/2018



PLEASE NOTE: Images are for illustrative purposes only. Rooms shown may not be representative of this property.