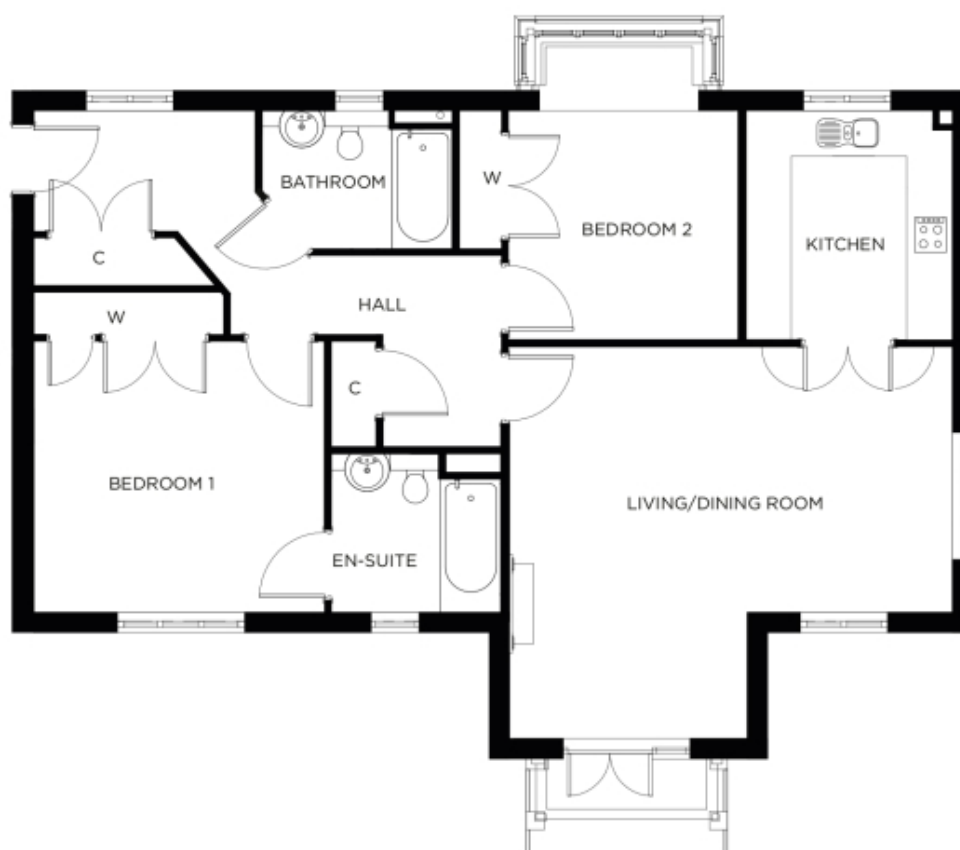


# 4 Saunders Mews

A beautiful modern home



## Price: £POA\*, First floor

This beautiful apartment features a versatile open plan living space adjacent to the fully-equipped kitchen. An en-suite master bedroom is supplemented by a second double-bedroom and separate bathroom, giving the flexibility to entertain guests all year round.

\* other charges apply

## Internal measurements: 1,100sq ft

Kitchen	9' 9" x 10' 3"	2,960 x 3,100mm
Living/Dining Room	20' 11" x 18' 2"	6,370 x 5,530mm
Bedroom 1	13' 3" x 12' 5"	4,030 x 3,770mm
Ensuite	8' 0" x 6' 9"	2,430 x 2,050mm
Bedroom 2	10' 10" x 10' 11"	3,290 x 3,310mm
Bathroom	8' 6" x 6' 9"	2,570 x 2,050mm

Apart from the fixtures and fittings described, the homes are unfurnished.

\* Based on a 125-year lease, and subject to service charge, event fees and ground rent. Please ask for further information.

Version 3 - 19/10/2018





PLEASE NOTE: Images are for illustrative purposes only. Rooms shown may not be representative of this property.