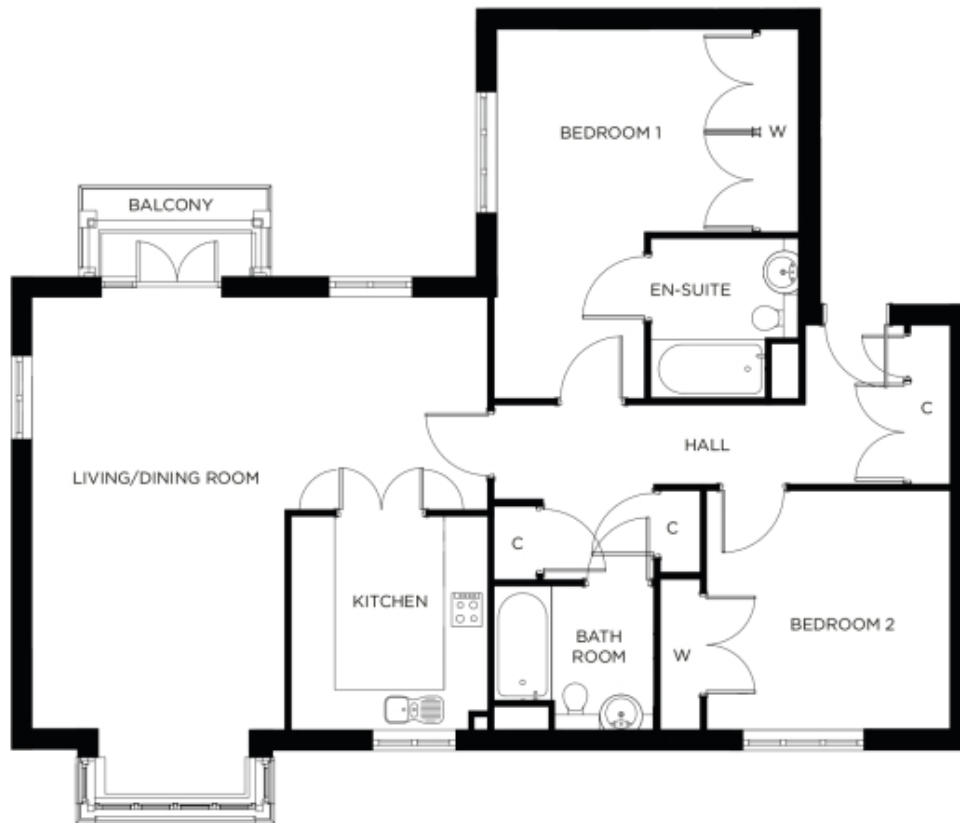


# 5 Saunders Mews



Price: £584,000\*, First floor

This spacious, stylish apartment features two double bedrooms (master en-suite), a storage-filled hallway, and an open-plan dining area connected to a fully equipped kitchen. The second bedroom and separate bathroom are perfect for family and guests.

\* other charges apply

Internal measurements: 1,178sq ft

Kitchen	9' 8" x 10' 6"	2,940 x 3,200mm
Living/Dining Room	22' 7" x 21' 4"	6,860 x 6,480mm
Bedroom 1	12' 7" x 18' 7"	3,830 x 5,650mm
Ensuite	6' 9" x 8' 0"	2,050 x 2,430mm
Bedroom 2	10' 11" x 10' 9"	3,320 x 3,260mm
Bathroom	6' 10" x 8' 11"	2,060 x 2,700mm

Apart from the fixtures and fittings described, the homes are unfurnished.

\* Based on a 125-year lease, and subject to service charge, event fees and ground rent. Please ask for further information.

Version 3 - 19/10/2018





PLEASE NOTE: Images are for illustrative purposes only. Rooms shown may not be representative of this property.