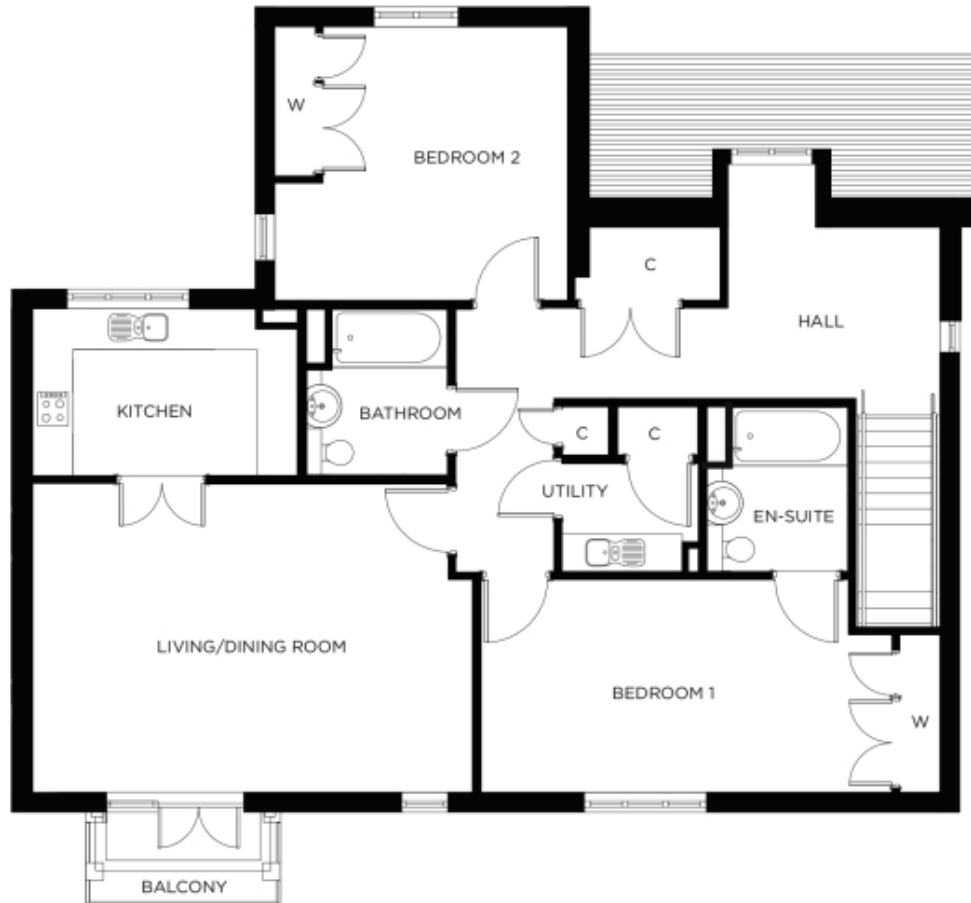


4 Wilson Meadows

A beautiful modern home



Price: £646,000* , First floor

Internal measurements: 1,317sq ft

This exceptional apartment features a self-contained kitchen that's accessible from both the hallway and the large open-plan living area. Two large double bedrooms (one en-suite) and a separate bathroom are complemented by ample storage space throughout.

* other charges apply

Kitchen	12' 11" x 8' 1"	3,920 x 2,450mm
Living/Dining Room	21' 5" x 15' 1"	6,510 x 4,590mm
Bedroom 1	20' 0" x 10' 5"	6,090 x 3,150mm
Ensuite	8' 0" x 6' 10"	2,430 x 2,080mm
Bedroom 2	14' 3" x 13' 4"	4,340 x 4,050mm
Bathroom	8' 0" x 6' 9"	2,430 x 2,050mm

Apart from the fixtures and fittings described, the homes are unfurnished.

* Based on a 125-year lease, and subject to service charge, event fees and ground rent. Please ask for further information.

Version 3 - 19/10/2018



PLEASE NOTE: Images are for illustrative purposes only. Rooms shown may not be representative of this property.