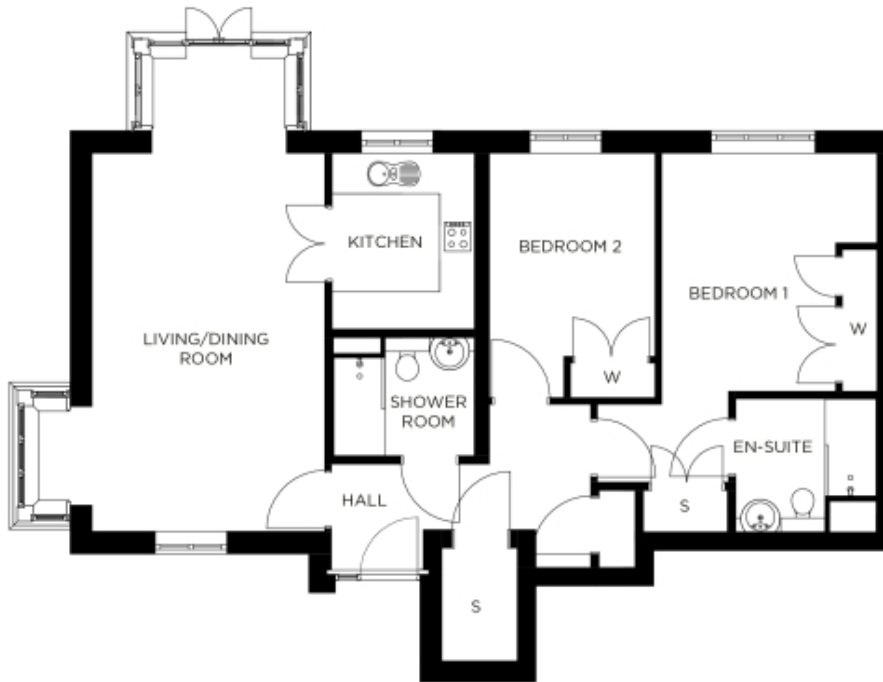


2 Partridge House

A beautiful modern home



Price: £POA*, Ground floor

This beautifully proportioned apartment features two generous double bedrooms (one en suite) as well as a separate bathroom and integrated storage space throughout. The sizeable open plan living/dining space leads to a modern kitchen, with double doors creating added flexibility. It's the perfect home in which to entertain family and friends all year round.

* other charges apply

Internal measurements: 1,084sq ft

| | | |
|--------------------|-----------------|-----------------|
| Kitchen | 8' 3" x 9' 11" | 2,490 x 3,020mm |
| Living/Dining Room | 13' 4" x 21' 6" | 4,050 x 6,550mm |
| Bedroom 1 | 12' 4" x 13' 8" | 3,750 x 4,150mm |
| Ensuite | 8' 1" x 7' 7" | 2,440 x 2,290mm |
| Bedroom 2 | 9' 6" x 11' 8" | 2,880 x 3,540mm |
| Shower Room | 8' 1" x 6' 9" | 2,440 x 2,040mm |



PLEASE NOTE: Images are for illustrative purposes only, rooms shown may not be representative of this property.