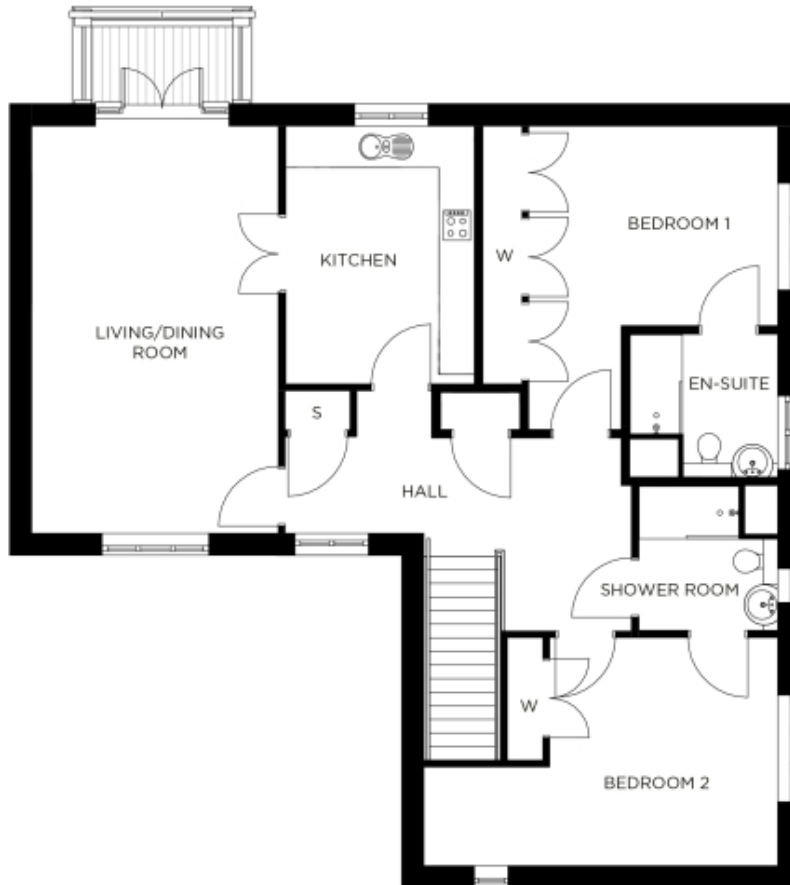


3 Partridge House

A beautiful modern home



Price: £620,000*, First floor

A grand apartment with enviable living space and large windows that let in lots of natural light. Its airy living room and large dining kitchen with pantry are complemented by a large en suite master bedroom, a spacious second double bedroom and generous hall with ample storage.

* other charges apply

Internal measurements: 1,290sq ft

Kitchen	10' 5" x 14' 4"	3,160 x 4,360mm
Living/Dining Room	13' 9" x 22' 8"	4,170 x 6,890mm
Bedroom 1	13' 11" x 10' 11"	4,220 x 3,320mm
Ensuite	8' 1" x 7' 7"	2,440 x 2,290mm
Bedroom 2	12' 6" x 12' 0"	3,800 x 3,650mm
Shower Room	7' 9" x 8' 2"	2,350 x 2,470mm



PLEASE NOTE: Images are for illustrative purposes only, rooms shown may not be representative of this property.