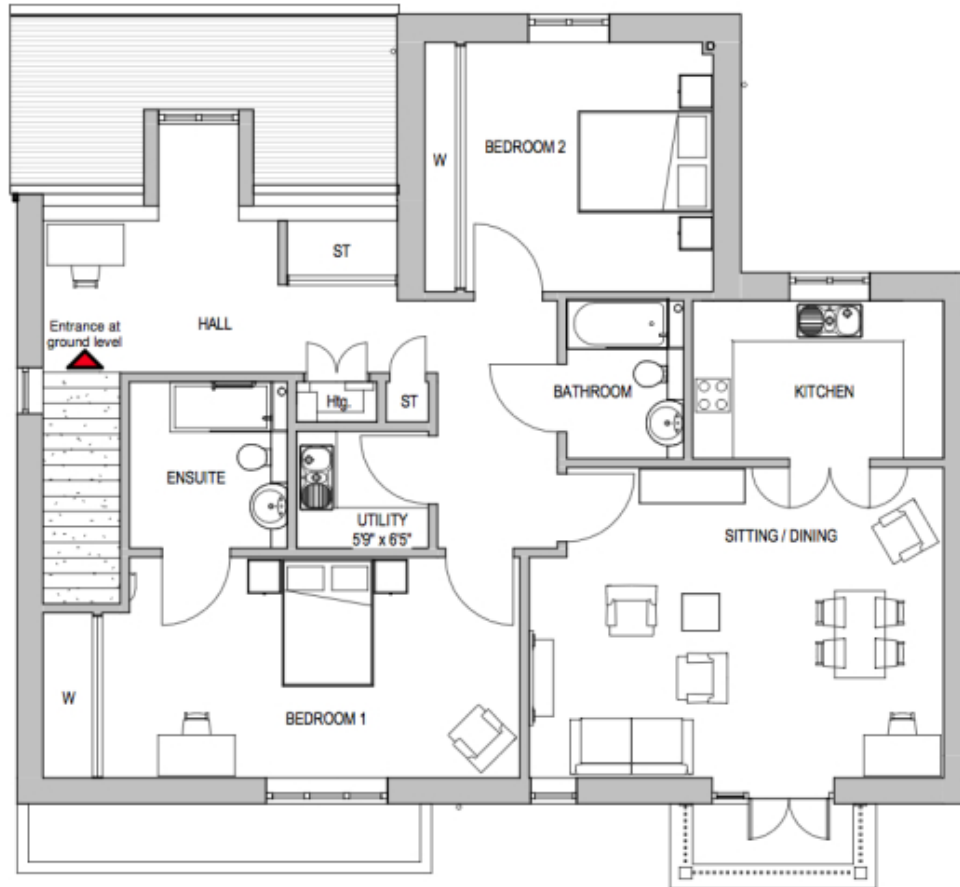


# 4 Rowan Mews



Price: £605,000\*, First floor

Internal measurements: 1,292sq ft

\* other charges apply

Sitting/Dining	15' 2" x 20' 3"	4,619 x 6,165mm
Kitchen	7' 9" x 12' 3"	2,345 x 3,733mm
Bathroom	7' 8" x 5' 9"	2,315 x 1,740mm
Bedroom 1	10' 9" x 20' 6"	3,276 x 6,248mm
Ensuite	8' 2" x 7' 9"	2,475 x 2,351mm
Bedroom 2	12' 3" x 12' 3"	3,713 x 3,713mm
Utility	5' 9" x 6' 6"	1,740 x 1,963mm

Apart from the fixtures and fittings described, the homes are unfurnished.

\* Based on a 125-year lease, and subject to service charge, event fees and ground rent. Please ask for further information.

Version 3 - 19/10/2018



