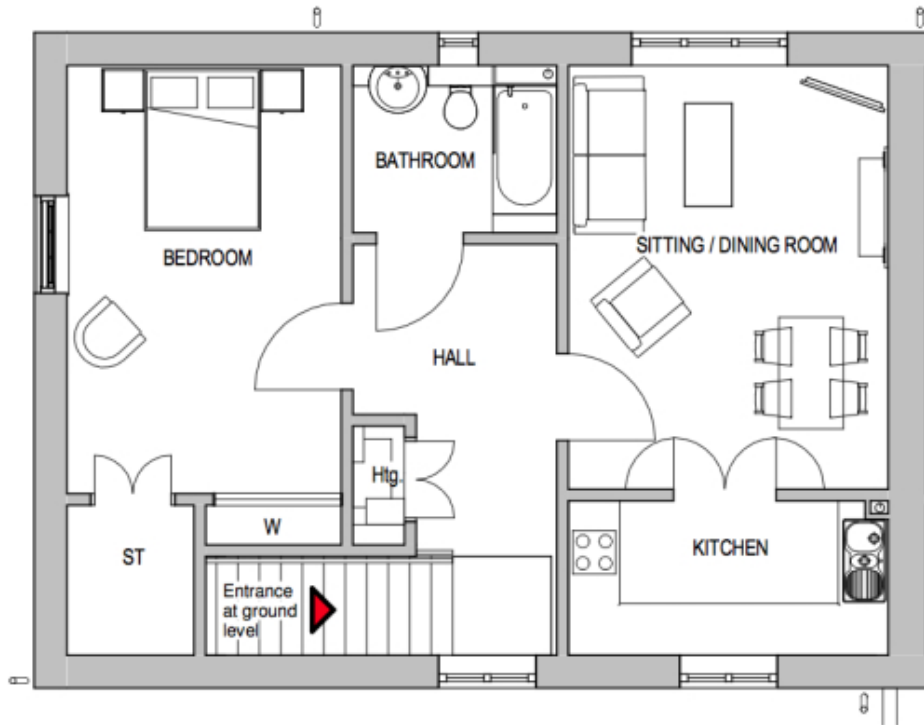


2 Cherry Walk

A beautiful modern home



Price: £264,000*, First floor

Internal measurements: 679sq ft

The Wignall is an attractive, charming apartment with lots of appealing features. Boasting a large double bedroom with separate bathroom, and ample storage space throughout. Thereâ€™s also the spacious open plan living/dining area which opens to a private terrace on one side, and a fully equipped kitchen accessed through double doors.

Sitting/Dining	16' 3" x 12' 3"	4,940 x 3,730mm
Kitchen	5' 11" x 12' 3"	1,800 x 3,730mm
Bathroom	6' 5" x 7' 10"	1,950 x 2,373mm
Bedroom	15' 4" x 10' 6"	4,673 x 3,200mm

* other charges apply

Apart from the fixtures and fittings described, the homes are unfurnished.

* Based on a 125-year lease, and subject to service charge, event fees and ground rent. Please ask for further information.

Version 3 - 19/10/2018

