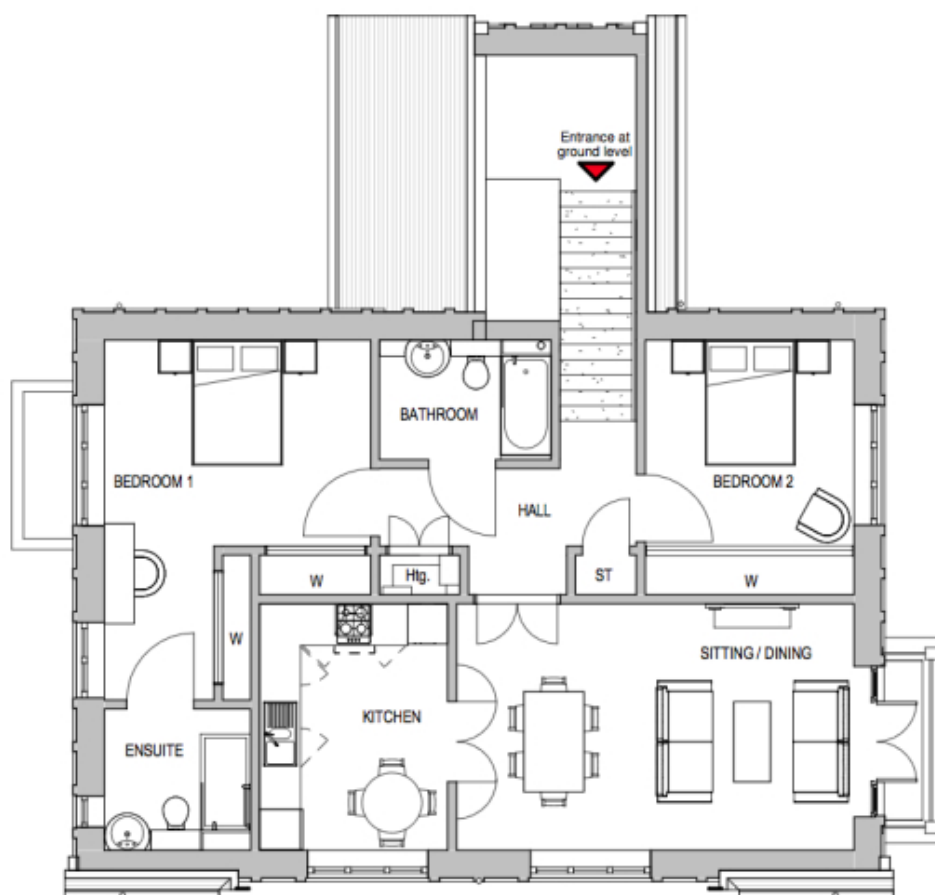


# 2 Foxglove Manor

A beautiful modern home



Price: £399,995\*, First floor

The Brereton features a large en suite master bedroom and second double bedroom adjacent to the separate bathroom. The generous proportions continue into the flexible open-plan living/dining space and adjoining kitchen diner, both of which will be flooded with light from the large windows.

\* other charges apply

Apart from the fixtures and fittings described, the homes are unfurnished.

\* Based on a 125-year lease, and subject to service charge, event fees and ground rent. Please ask for further information.

Version 3 - 19/10/2018

Internal measurements: 1,033sq ft

Sitting/Dining	12' 2" x 19' 7"	3,700 x 5,967mm
Kitchen	12' 2" x 9' 4"	3,700 x 2,825mm
Bathroom	6' 1" x 8' 6"	1,854 x 2,571mm
Bedroom 1	10' 8" x 13' 2"	3,230 x 4,002mm
Ensuite	7' 0" x 7' 3"	2,120 x 2,200mm
Bedroom 2	10' 8" x 10' 4"	3,230 x 3,132mm



