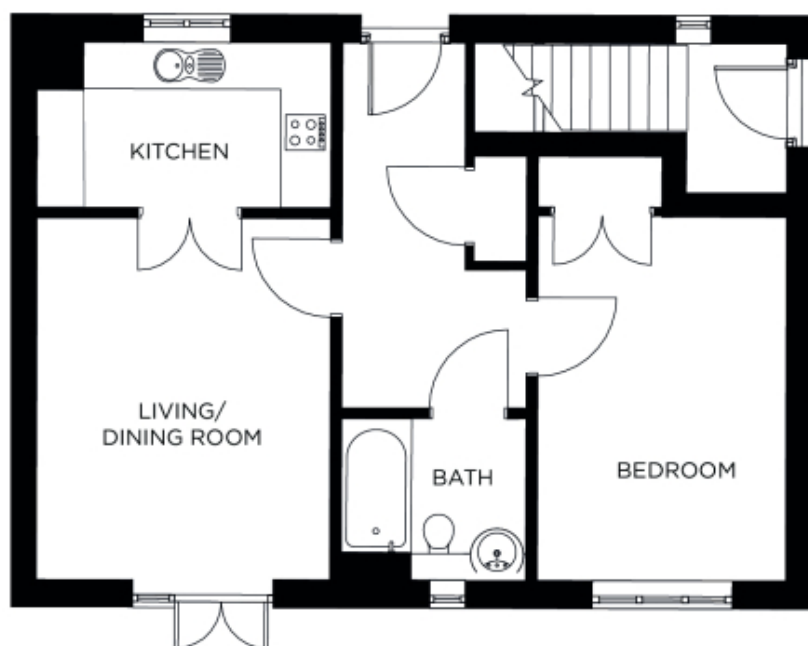


# 37 Pine Grove

A beautiful modern home



**Price: £267,750\***, Ground floor

The Wignall is an attractive, charming apartment with lots of appealing features. Boasting a large double bedroom with separate bathroom, and ample storage space throughout. There's also the spacious open plan living/dining area which opens to a private terrace on one side, and a fully equipped kitchen accessed through double doors.

\* other charges apply

Apart from the fixtures and fittings described, the homes are unfurnished.

\* Based on a 125-year lease, and subject to service charge, event fees and ground rent. Please ask for further information.

Version 3 - 19/10/2018

**Internal measurements: 646sq ft**

Kitchen	12' 6" x 7' 0"	3,790 x 2,130mm
Living/Dining Room	12' 9" x 15' 4"	3,870 x 4,670mm
Bedroom 1	10' 3" x 15' 5"	3,120 x 4,680mm
Bathroom	7' 10" x 6' 8"	2,380 x 2,010mm

