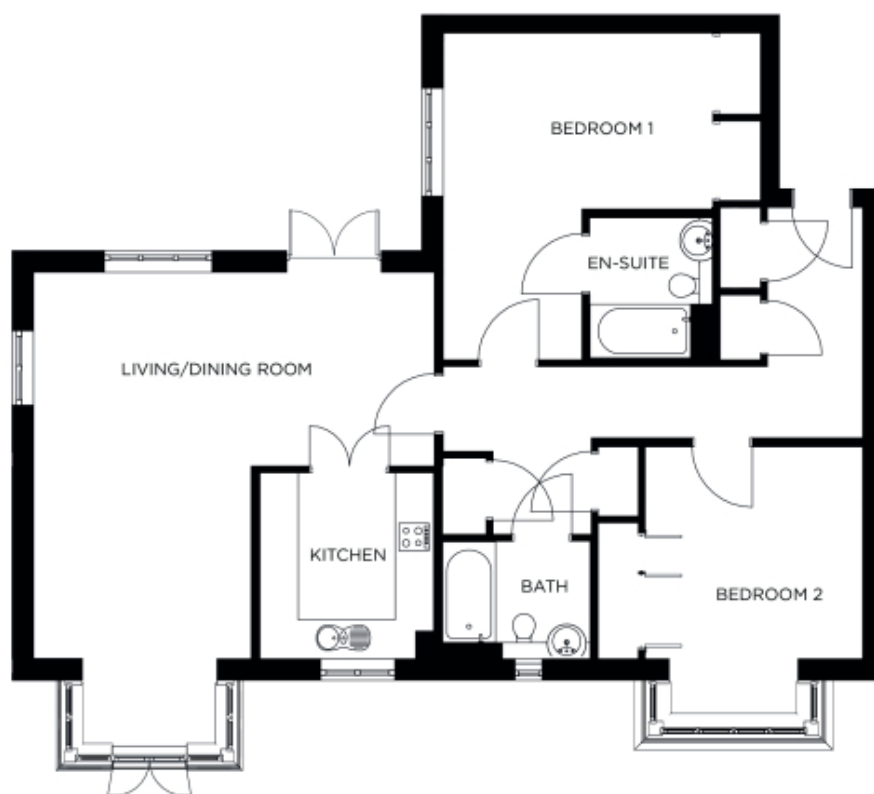


# 7 Hazel Manor

A beautiful modern home



## Price: £POA\*, Ground floor

This attractive apartment combines spacious proportions with practical design. Two generous double bedrooms (with master en suite) are linked by a hallway with ample storage. A large open-plan dining area adjoins the fully equipped kitchen. The second bedroom and separate bathroom make this apartment perfect for accommodating family and friends.

\* other charges apply

Apart from the fixtures and fittings described, the homes are unfurnished.

\* Based on a 125-year lease, and subject to service charge, event fees and ground rent. Please ask for further information.

Version 3 - 19/10/2018

## Internal measurements: 1,313sq ft

Kitchen	9' 7" x 10' 3"	2,920 x 3,110mm
Living/Dining Room	21' 3" x 22' 1"	6,470 x 6,720mm
Bedroom 1	14' 11" x 9' 9"	4,540 x 2,970mm
Ensuite	6' 9" x 7' 9"	2,050 x 2,360mm
Bedroom 2	12' 0" x 12' 1"	3,650 x 3,660mm
Bathroom	8' 2" x 6' 6"	2,470 x 1,970mm

