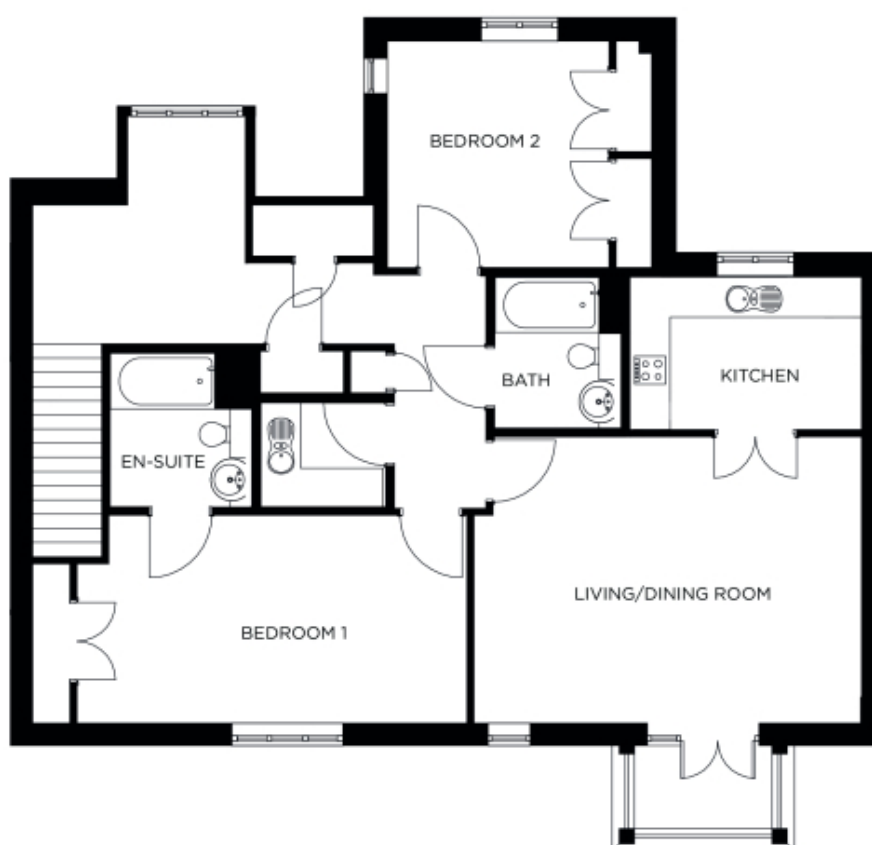


28 Rose Court

A beautiful modern home



Price: £724,000*, First floor

The Churchill is an impressive home with a large versatile living area that benefits from lots of natural light thanks to the elegant French doors and large windows. This exceptional apartment features a fully equipped kitchen that's accessible from both the hallway and the large open-plan living area. Two large double bedrooms (one en suite) and a separate bathroom are complemented by ample storage space throughout.

Internal measurements: 1,421sq ft

Kitchen	9' 4" x 12' 4"	2,820 x 3,750mm
Living/Dining Room	13' 9" x 22' 5"	4,180 x 6,830mm
Bedroom 1	13' 2" x 15' 1"	4,000 x 4,590mm
Ensuite	8' 0" x 7' 5"	2,420 x 2,240mm
Bedroom 2	12' 9" x 12' 5"	3,880 x 3,780mm
Bathroom	8' 0" x 7' 4"	2,420 x 2,210mm

* Other charges apply. All measurements and descriptions are approximate. The homes are unfurnished.

* Based on a 125-year lease, and subject to service charge, event fees and ground rent. Please ask for further information.

Version 3 - 19/10/2018

