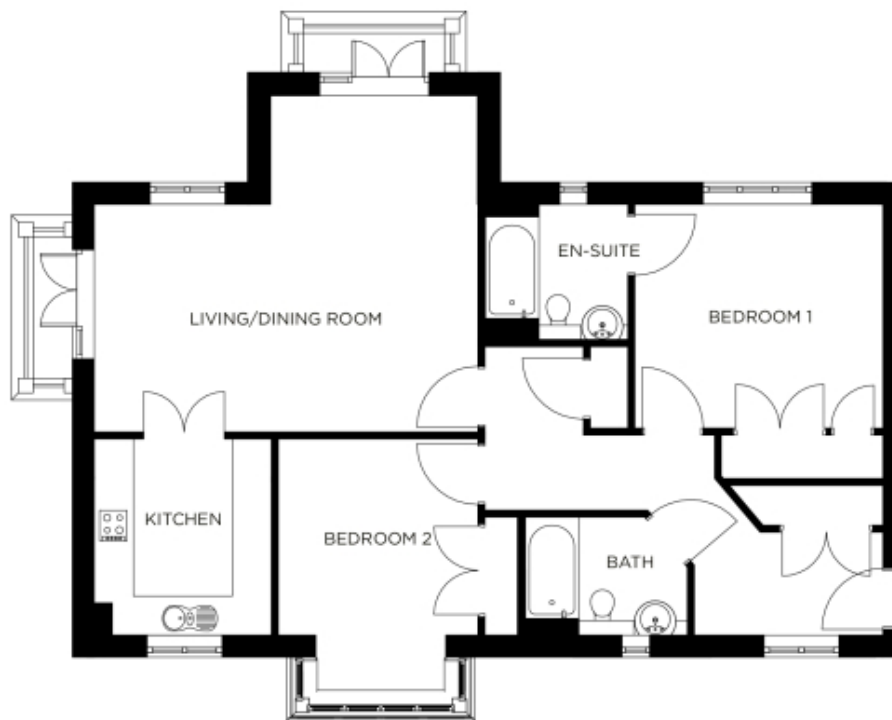


19 Sundew Lodge

A beautiful modern home



Price: £POA*, First floor

This beautiful apartment features a versatile open-plan living space adjacent to the fully equipped kitchen. An en suite master bedroom is supplemented by a second double bedroom and separate bathroom, giving the flexibility to entertain guests all year round. An entrance with ample storage flows into an interior complete with the very latest fixtures, fittings and appliances.

Internal measurements: 1,109sq ft

Kitchen	9' 8" x 11' 1"	2,940 x 3,370mm
Living/Dining Room	21' 6" x 18' 10"	6,550 x 5,730mm
Bedroom 1	13' 6" x 12' 9"	4,090 x 3,870mm
Ensuite	7' 6" x 7' 11"	2,280 x 2,390mm
Bedroom 2	11' 1" x 11' 2"	3,370 x 3,390mm
Bathroom	8' 11" x 6' 6"	2,700 x 1,960mm

* other charges apply

Apart from the fixtures and fittings described, the homes are unfurnished.

* Based on a 125-year lease, and subject to service charge, event fees and ground rent. Please ask for further information.

Version 3 - 19/10/2018

