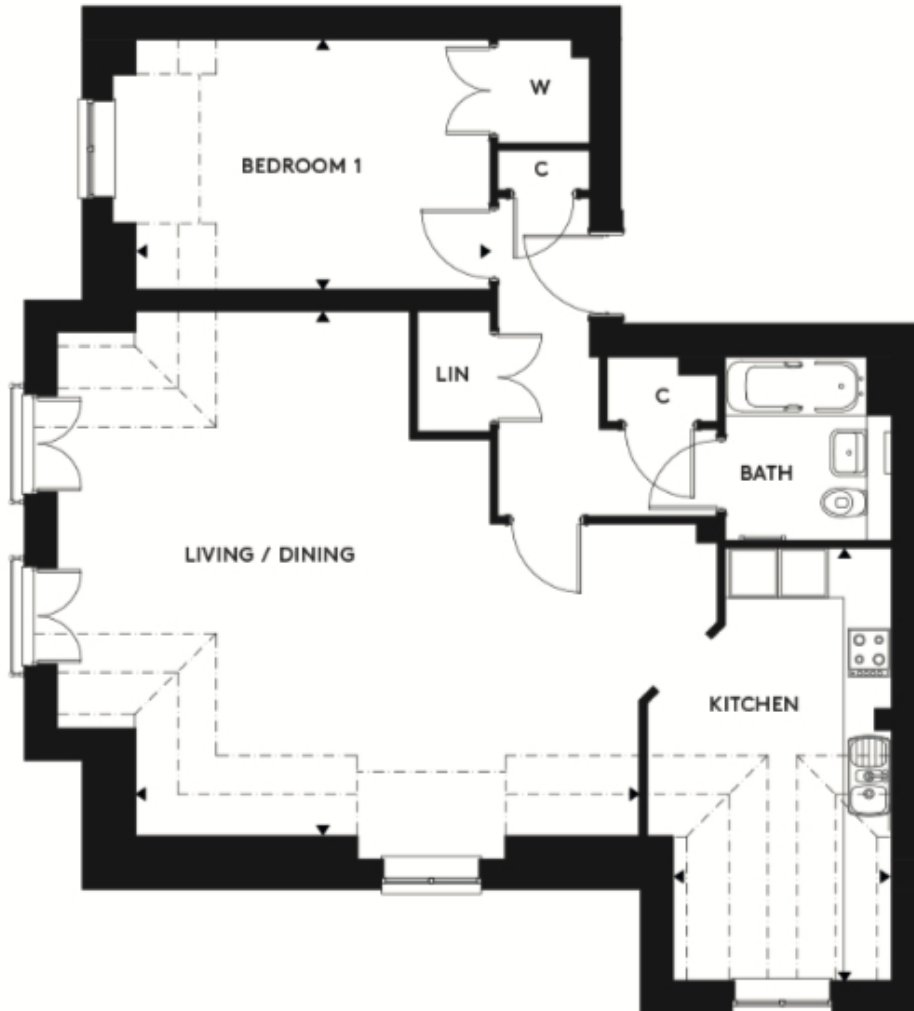


108 Great Alne Park

A beautiful modern home



Price: £357,500*, Second floor

Internal measurements: 890sq ft

Set adjacent to the village's club house, Millway Lodge is located at the heart of the village, perfect for those looking to be in close reach of the main residentsâ™ facilities. It offers a range of generously sized one and two bedroom apartments.

Kitchen	8' 6" x 17' 0"	2,580 x 5,160mm
Living/Dining	19' 9" x 20' 7"	6,010 x 6,260mm
Bedroom 1	13' 11" x 9' 9"	4,220 x 2,950mm

* other charges apply

Apart from the fixtures and fittings described, the homes are unfurnished.

* Based on a 125-year lease, and subject to service charge, event fees and ground rent. Please ask for further information.

Version 3 - 19/10/2018



PLEASE NOTE: Images are for illustrative purposes only, Rooms shown may not be representative of this property.