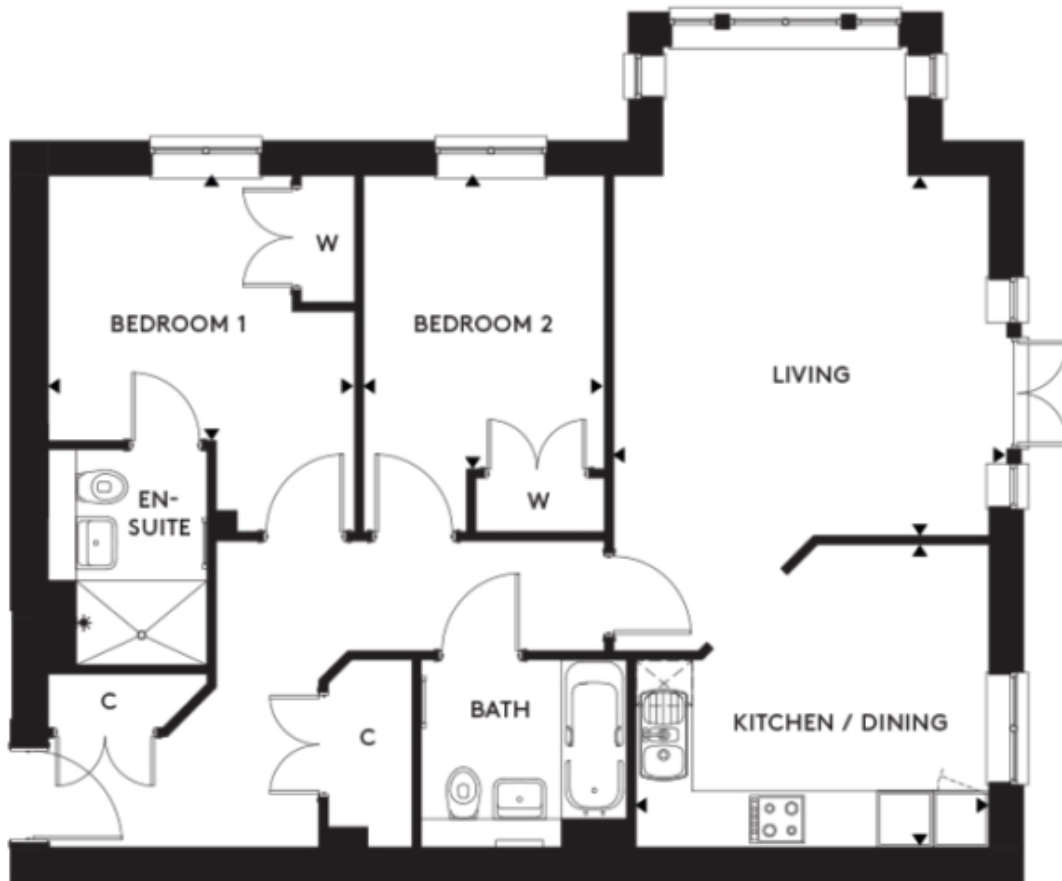


3 Millway Lodge



Price: £435,000*, Ground floor

Internal measurements: 814sq ft

* other charges apply

Kitchen	12' 3" x 10' 6"	3,720 x 3,180mm
Living/Dining	13' 0" x 12' 6"	3,960 x 3,790mm
Bedroom 1	10' 8" x 9' 2"	3,230 x 2,780mm
Bedroom 2	8' 4" x 9' 10"	2,520 x 2,980mm

Apart from the fixtures and fittings described, the homes are unfurnished.

* Based on a 125-year lease, and subject to service charge, event fees and ground rent. Please ask for further information.

Version 3 - 19/10/2018



PLEASE NOTE: Images are for illustrative purposes only, Rooms shown may not be representative of this property.