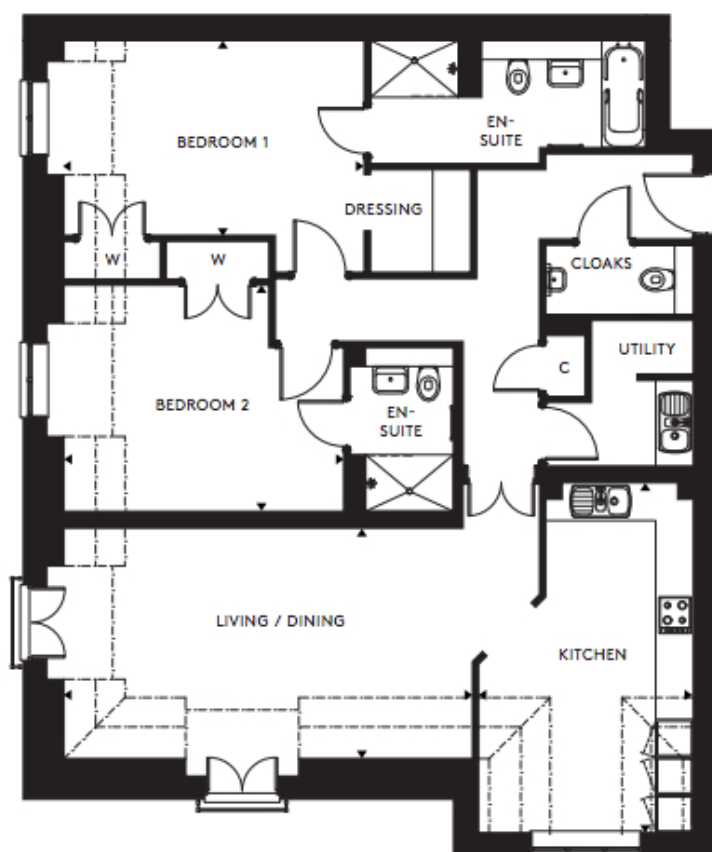


96 Great Alne Park

A beautiful modern home



Price: £POA*, Second floor

Boasting impressive views over the feature garden and landscaped grounds, Austin House occupies a prominent position â€” hard to miss as you enter the village. The buildingâ€™s architecture is inspired by that of the local area and offers a variety of spacious two bedroom apartments complete with en-suites to the master bedrooms.

* other charges apply

Apart from the fixtures and fittings described, the homes are unfurnished.

* Based on a 125-year lease, and subject to service charge, event fees and ground rent. Please ask for further information.

Version 3 - 19/10/2018

Internal measurements: 1,278sq ft

Kitchen	11' 1" x 18' 1"	3,370 x 5,510mm
Living/Dining	21' 2" x 11' 11"	6,440 x 3,610mm
Bedroom 1	15' 6" x 10' 0"	4,720 x 3,040mm
Bedroom 2	14' 6" x 11' 8"	4,400 x 3,540mm



PLEASE NOTE: Images are for illustrative purposes only, Rooms shown may not be representative of this property.