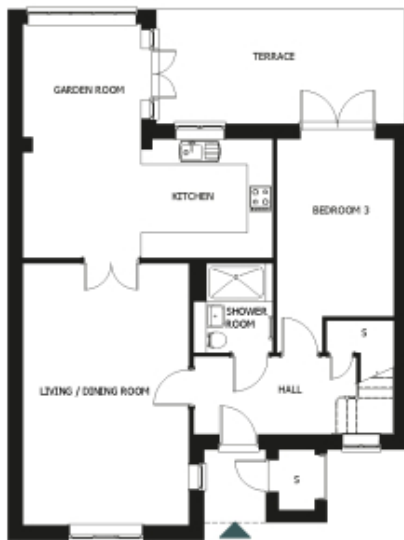


# 54 Woodland Drive

A beautiful modern home



Price: £734,500\*

This beautiful house features a versatile open-plan living space next to the fully equipped kitchen. An en suite master bedroom is supplemented by a second en suite double bedroom, third bedroom and separate shower-room, giving the flexibility to entertain guests all year round. An entrance with ample storage flows into an interior complete with the very latest fixtures, fittings and appliances.

\*Other charges apply. All fittings described, the homes are unfurnished.

\* Based on a 125-year lease, and subject to service charge, event fees and ground rent. Please ask for further information.

Version 3 - 19/10/2018

Internal measurements: 1,485sq ft

Living	12' 10" x 20' 3"	3,910 x 6,170mm
Kitchen	19' 4" x 9' 3"	5,890 x 2,800mm
Bedroom 1	0' 10" x 0' 5"	232 x 111mm
Bedroom 2	0' 1" x 0' 1"	10 x 5mm
Bedroom 3	0' 1" x 0' 1"	1 x 1mm
Ensuite 1	0' 1" x 0' 1"	1 x 1mm
Ensuite 2	0' 1" x 0' 1"	1 x 1mm
Shower	0' 1" x 0' 1"	1 x 1mm
Garden Room	0' 1" x 0' 1"	1 x 1mm
Patio	0' 1" x 0' 1"	1 x 1mm



PLEASE NOTE: Images are for illustrative purposes only, Rooms shown may not be representative of this property.