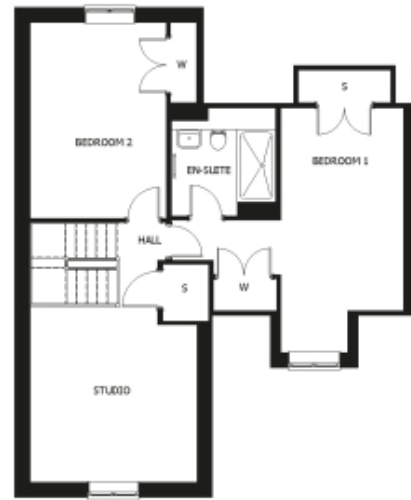


29 Woodland Drive

A beautiful modern home



Price: £785,500*

This beautiful house features a versatile open-plan living space next to the fully equipped kitchen. An en suite master bedroom is supplemented by a second en suite double bedroom, third bedroom and separate shower-room, giving the flexibility to entertain guests all year round. An entrance with ample storage flows into an interior complete with the very latest fixtures, fittings and appliances.

*Other charges apply. As per the descriptions described, the homes are unfurnished.

* Based on a 125-year lease, and subject to service charge, event fees and ground rent. Please ask for further information.

Version 3 - 19/10/2018

Internal measurements: 1,580sq ft

Living	0' 0" x 0' 0"	0 x 0mm
Kitchen	0' 0" x 0' 0"	0 x 0mm
Bedroom 1	0' 0" x 0' 0"	0 x 0mm
Bedroom 2	0' 0" x 0' 0"	0 x 0mm
Bedroom 3	0' 0" x 0' 0"	0 x 0mm
Ensuite 1	0' 0" x 0' 0"	0 x 0mm
Shower	0' 0" x 0' 0"	0 x 0mm
Study	0' 0" x 0' 0"	0 x 0mm
Garden Room	0' 0" x 0' 0"	0 x 0mm
Patio	0' 0" x 0' 0"	0 x 0mm



PLEASE NOTE: Images are for illustrative purposes only, Rooms shown may not be representative of this property.