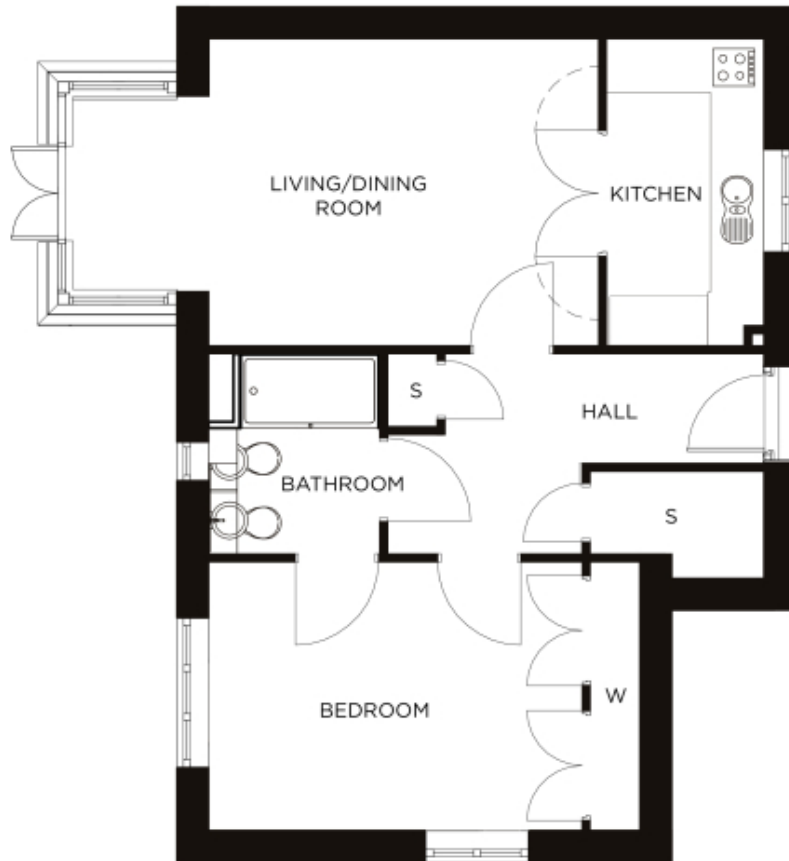


60 Wykeham Manor

A beautiful modern home



Price: £POA*, Ground floor

There are two delightful, one-bedroom Wignall apartments, and both feature versatile open-plan living space adjacent to the self-contained kitchen. Enjoy easy access to the village centre with either a ground- or first-floor property.

* other charges apply

Internal measurements: 700sq ft

Living/Dining	15' 7" x 12' 3"	4,746 x 3,731mm
Bedroom 1	15' 0" x 10' 9"	4,547 x 3,271mm
En-suite 1	8' 0" x 6' 10"	2,430 x 2,080mm
Store 1	2' 11" x 2' 0"	880 x 600mm
Kitchen	12' 3" x 6' 4"	3,731 x 1,913mm



PLEASE NOTE: Images are for illustrative purposes only. Rooms shown may not be representative of this property.