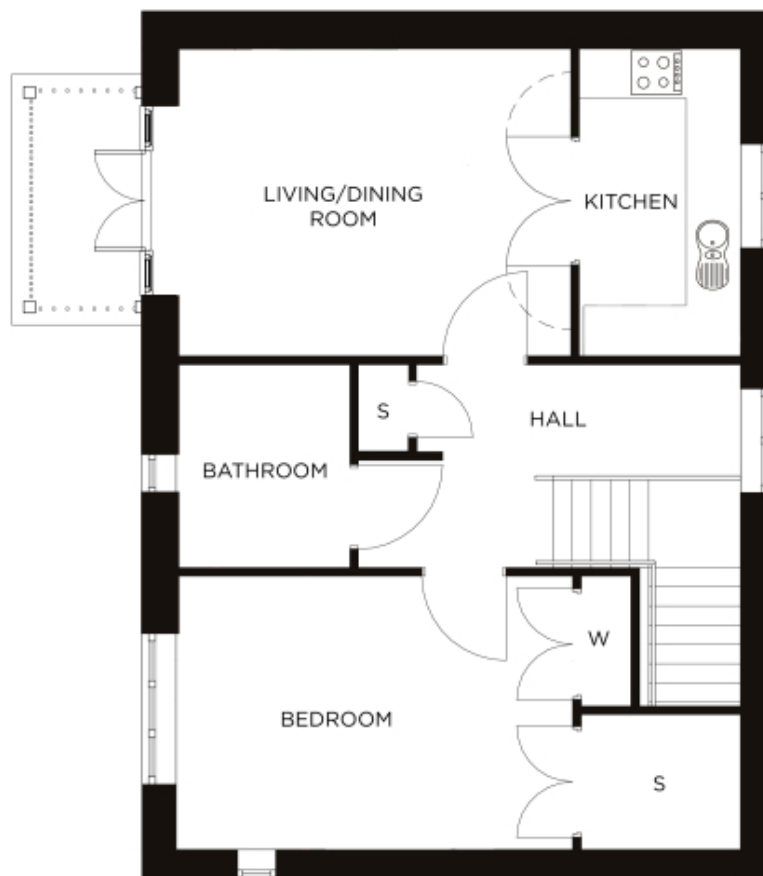


# 63 Wykeham Manor

A beautiful modern home



Price: £439,000\*, First floor

There are two delightful, one-bedroom Wignall apartments, and both feature versatile open-plan living space adjacent to the self-contained kitchen. Enjoy easy access to the village centre with either a ground- or first-floor property.

\* other charges apply

Internal measurements: 786sq ft

Living/Dining	15' 7" x 12' 3"	4,725 x 3,731mm
Bedroom 1	15' 7" x 10' 9"	4,748 x 3,271mm
Bathroom	8' 0" x 6' 10"	2,430 x 2,080mm
Store 1	3' 5" x 2' 0"	1,040 x 600mm
Kitchen	12' 3" x 6' 5"	3,731 x 1,934mm



PLEASE NOTE: Images are for illustrative purposes only. Rooms shown may not be representative of this property.