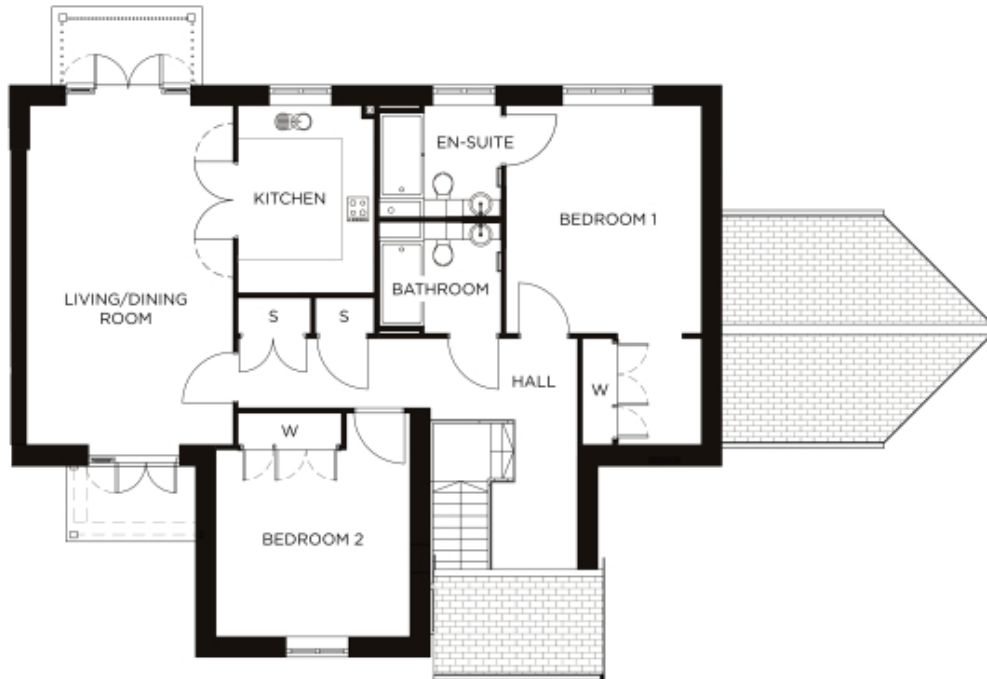


# 3 Arch Vale

A beautiful modern home



Price: £649,500\*, First floor

There are two impressive Bronte apartments, both with dual aspect living/dining room and adjacent self-contained kitchen. The master bedroom benefits from a walk-in wardrobe and en-suite, whilst the second double bedroom and separate bathroom are further examples of the enviable space.

\* other charges apply

Internal measurements: 1,356sq ft

Kitchen	12' 3" x 8' 11"	3,731 x 2,713mm
Living/Dining	22' 3" x 13' 7"	6,759 x 4,116mm
Bedroom 1	14' 11" x 12' 10"	4,541 x 3,898mm
Bedroom 2	14' 8" x 12' 9"	4,457 x 3,870mm
Bathroom	8' 0" x 7' 4"	2,430 x 2,221mm
En-suite 1	8' 0" x 7' 4"	2,430 x 2,221mm
Store 1	4' 9" x 2' 4"	1,445 x 710mm
Store 2	3' 10" x 2' 4"	1,168 x 710mm
Dressing room 1	7' 0" x 5' 6"	2,118 x 1,675mm





PLEASE NOTE: Images are for illustrative purposes only. Rooms shown may not be representative of this property.