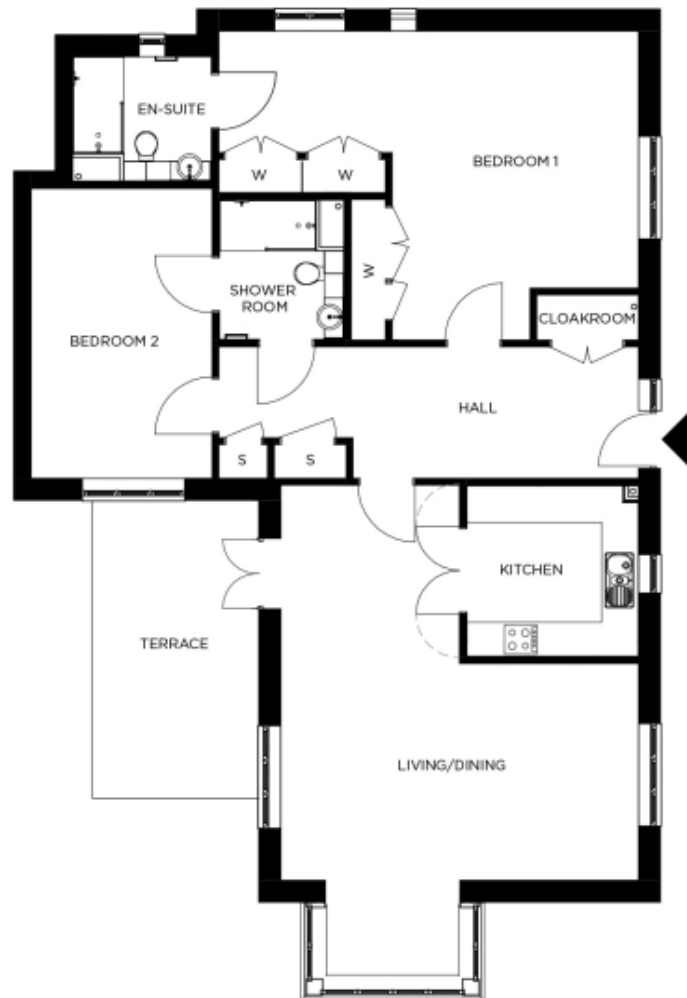


84 Biddenden Court



Price: £846,000*, Ground floor

Internal measurements: 1,405sq ft

This attractive apartment combines spacious proportions with practical design. Two generous double bedrooms (with master en suite) are linked by a hallway with ample storage. A large open-plan dining area adjoins the fully equipped kitchen. The second bedroom and separate bathroom make this apartment perfect for accommodating family and friends.

* other charges apply

Living	20' 10" x 28' 1"	6,342 x 8,545mm
Kitchen	9' 9" x 11' 6"	3,010 x 3,453mm
Hallway	24' 6" x 7' 9"	7,449 x 2,353mm
Bedroom 1	14' 5" x 17' 11"	4,385 x 5,439mm
Wardrobe	2' 1" x 8' 1"	613 x 2,461mm
Wardrobe	9' 8" x 2' 0"	2,937 x 600mm
Ensuite 1	8' 1" x 7' 3"	2,450 x 2,197mm
Bedroom 2	10' 6" x 16' 10"	3,184 x 5,127mm
Shower	7' 3" x 8' 1"	2,200 x 2,450mm
Store	2' 11" x 2' 0"	873 x 600mm
Store	4' 3" x 2' 0"	1,275 x 600mm

Patio

9' 10" x 19' 8" 2,982 x 5,993mm



PLEASE NOTE: Images are for illustrative purposes only. Rooms shown may not be representative of this property.