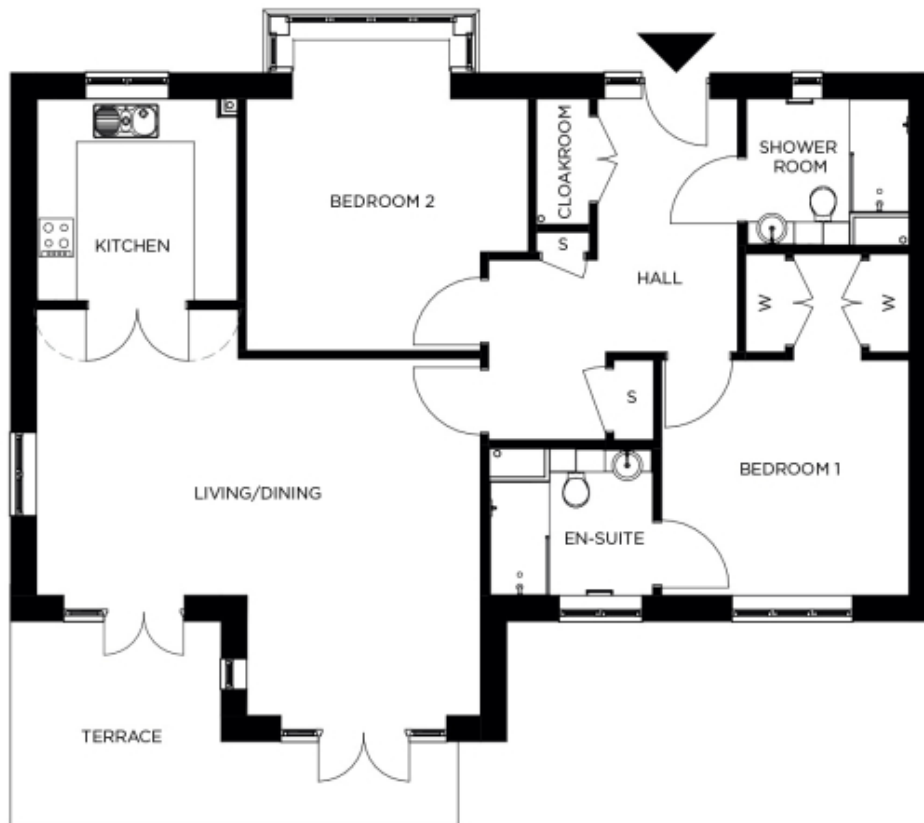


85 Biddenden Court



Price: £708,000*, Ground floor

This beautiful apartment features a versatile open-plan living space adjacent to the fully equipped kitchen. An en suite master bedroom is supplemented by a second double bedroom and separate bathroom, giving the flexibility to entertain guests all year round. An entrance with ample storage flows into an interior complete with the very latest fixtures, fittings and appliances.

* other charges apply

Internal measurements: 1,146sq ft

Living	21' 11" x 17' 6"	6,669 x 5,333mm
Kitchen	9' 11" x 10' 0"	3,010 x 3,045mm
Hallway	12' 5" x 12' 6"	3,760 x 3,806mm
Bedroom 1	12' 2" x 11' 8"	3,706 x 3,533mm
Wardrobe	2' 0" x 4' 11"	600 x 1,483mm
Wardrobe	2' 0" x 4' 11"	600 x 1,483mm
Ensuite 1	8' 1" x 7' 3"	2,450 x 2,200mm
Bedroom 2	13' 11" x 15' 6"	4,218 x 4,706mm
Store	2' 0" x 4' 0"	600 x 1,210mm
Patio	19' 9" x 12' 0"	6,015 x 3,651mm



PLEASE NOTE: Images are for illustrative purposes only. Rooms shown may not be representative of this property.