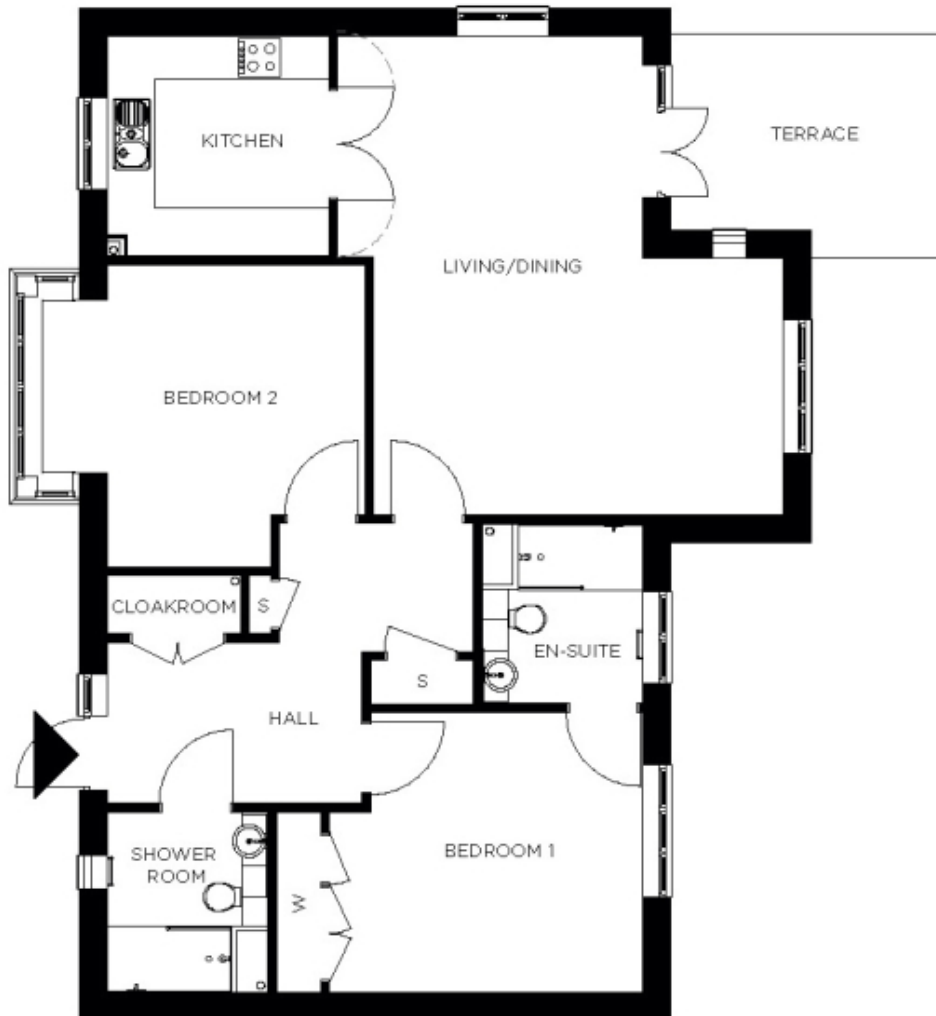


# 91 Charles Manor



Price: £687,000\*, Ground floor

Internal measurements: 1,132sq ft

This beautiful apartment features a versatile open-plan living space adjacent to the fully equipped kitchen. An en suite master bedroom is supplemented by a second double bedroom and separate bathroom, giving the flexibility to entertain guests all year round. An entrance with ample storage flows into an interior complete with the very latest fixtures, fittings and appliances.

\* other charges apply

Living	18' 5" x 21' 7"	5,606 x 6,566mm
Kitchen	10' 0" x 9' 11"	3,044 x 3,010mm
Hallway	11' 8" x 12' 7"	3,542 x 3,813mm
Bedroom 1	14' 2" x 12' 5"	4,309 x 3,777mm
Wardrobe	2' 0" x 8' 1"	600 x 2,460mm
Ensuite 1	7' 3" x 8' 2"	2,197 x 2,468mm
Bedroom 2	14' 7" x 13' 7"	4,433 x 4,120mm
Shower	7' 3" x 8' 1"	2,198 x 2,450mm
Store	4' 6" x 2' 1"	1,358 x 626mm
Patio	11' 7" x 9' 11"	3,517 x 3,016mm





PLEASE NOTE: Images are for illustrative purposes only. Rooms shown may not be representative of this property.