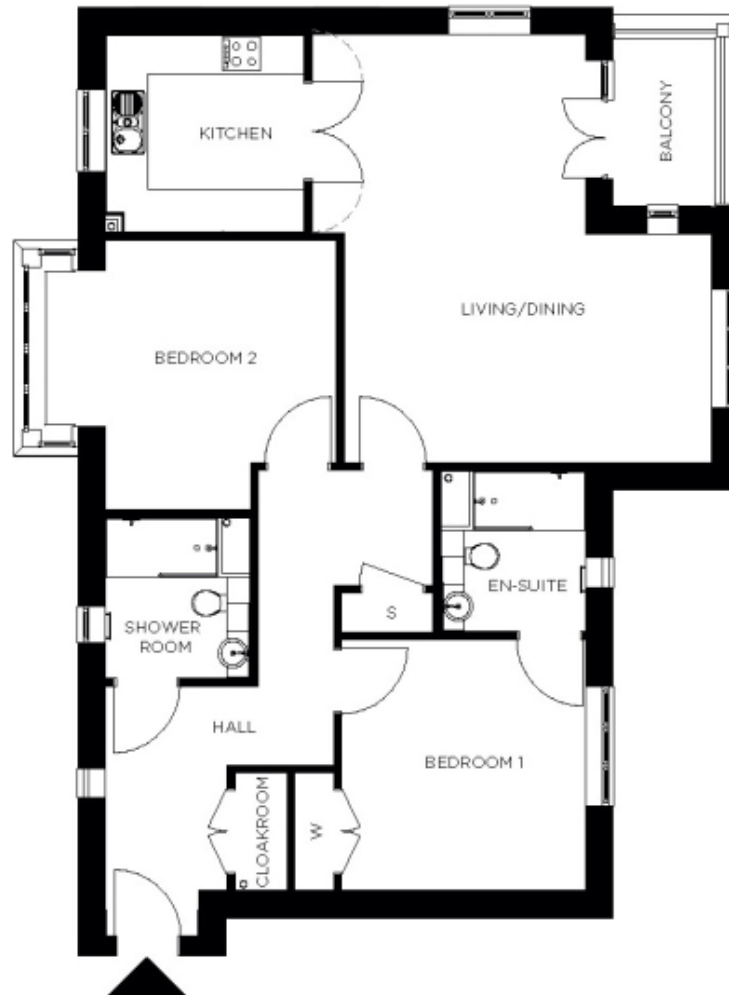


# 95 Charles Manor



Price: £667,000\*, First floor

This beautiful apartment features a versatile open-plan living space adjacent to the fully equipped kitchen. An en suite master bedroom is supplemented by a second double bedroom and separate bathroom, giving the flexibility to entertain guests all year round. An entrance with ample storage flows into an interior complete with the very latest fixtures, fittings and appliances.

\* other charges apply

Internal measurements: 1,144sq ft

|           |                 |                 |
|-----------|-----------------|-----------------|
| Living    | 18' 5" x 21' 8" | 5,611 x 6,584mm |
| Kitchen   | 10' 1" x 9' 11" | 3,058 x 3,010mm |
| Hallway   | 11' 6" x 14' 8" | 3,496 x 4,462mm |
| Bedroom 1 | 12' 4" x 12' 6" | 3,740 x 3,795mm |
| Wardrobe  | 2' 0" x 6' 0"   | 600 x 1,814mm   |
| Ensuite 1 | 7' 3" x 8' 1"   | 2,200 x 2,448mm |
| Bedroom 2 | 14' 7" x 13' 7" | 4,437 x 4,119mm |
| Shower    | 7' 3" x 8' 1"   | 2,198 x 2,448mm |
| Store     | 4' 8" x 2' 0"   | 1,417 x 600mm   |
| Balcony   | 5' 2" x 8' 1"   | 1,554 x 2,441mm |



PLEASE NOTE: Images are for illustrative purposes only. Rooms shown may not be representative of this property.