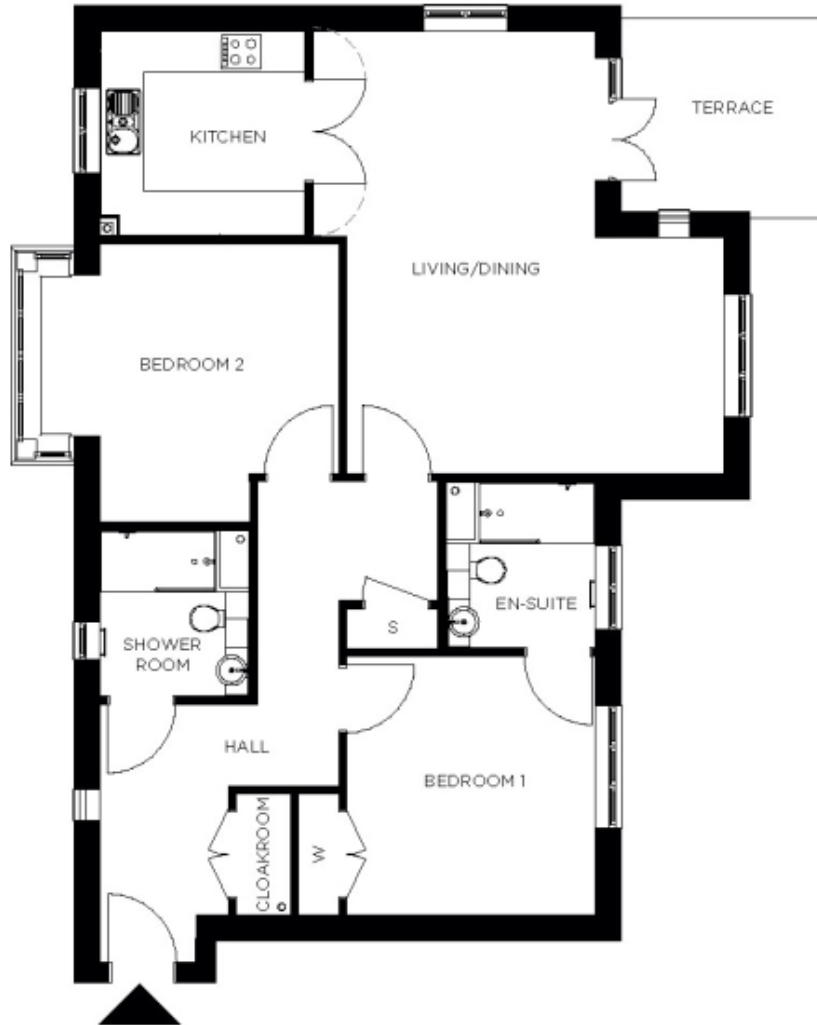


98 Berkeley House



Price: £705,000*, Ground floor

This beautiful apartment features a versatile open-plan living space adjacent to the fully equipped kitchen. An en suite master bedroom is supplemented by a second double bedroom and separate bathroom, giving the flexibility to entertain guests all year round. An entrance with ample storage flows into an interior complete with the very latest fixtures, fittings and appliances.

* other charges apply

Internal measurements: 1,139sq ft

Living	18' 5" x 21' 7"	5,609 x 6,562mm
Kitchen	10' 0" x 9' 11"	3,047 x 3,010mm
Hallway	11' 8" x 14' 5"	3,543 x 4,369mm
Bedroom 1	12' 2" x 12' 0"	3,703 x 3,646mm
Wardrobe	2' 0" x 6' 0"	600 x 1,816mm
Ensuite 1	7' 3" x 8' 1"	2,200 x 2,450mm
Bedroom 2	14' 9" x 13' 5"	4,476 x 4,072mm
Shower	7' 3" x 8' 1"	2,200 x 2,450mm
Store	4' 7" x 2' 2"	1,378 x 657mm
Patio	10' 6" x 10' 0"	3,182 x 3,030mm



PLEASE NOTE: Images are for illustrative purposes only. Rooms shown may not be representative of this property.