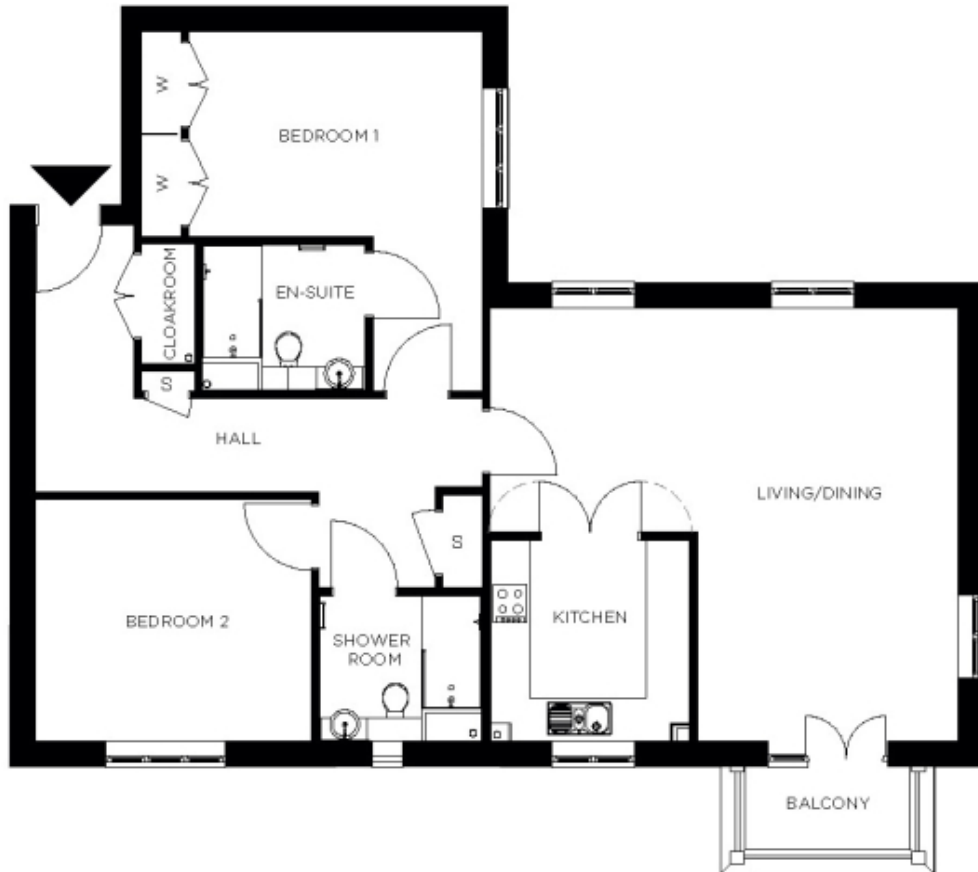


101 Berkeley House



Price: £733,000*, First floor

This attractive apartment combines spacious proportions with practical design. Two generous double bedrooms (with master en suite) are linked by a hallway with ample storage. A large open-plan dining area adjoins the fully equipped kitchen. The second bedroom and separate bathroom make this apartment perfect for accommodating family and friends.

* other charges apply

Internal measurements: 1,245sq ft

Living	23' 3" x 21' 7"	7,086 x 6,572mm
Kitchen	9' 11" x 10' 0"	3,010 x 3,046mm
Hallway	22' 4" x 13' 2"	6,797 x 4,005mm
Bedroom 1	14' 8" x 10' 1"	4,455 x 3,069mm
Wardrobe	2' 0" x 10' 1"	600 x 3,069mm
Ensuite 1	8' 1" x 7' 3"	2,450 x 2,200mm
Bedroom 2	14' 4" x 12' 1"	4,355 x 3,676mm
Shower	8' 1" x 7' 3"	2,450 x 2,200mm
Store	2' 2" x 4' 11"	657 x 1,474mm
Balcony	8' 7" x 4' 3"	2,608 x 1,280mm



PLEASE NOTE: Images are for illustrative purposes only. Rooms shown may not be representative of this property.