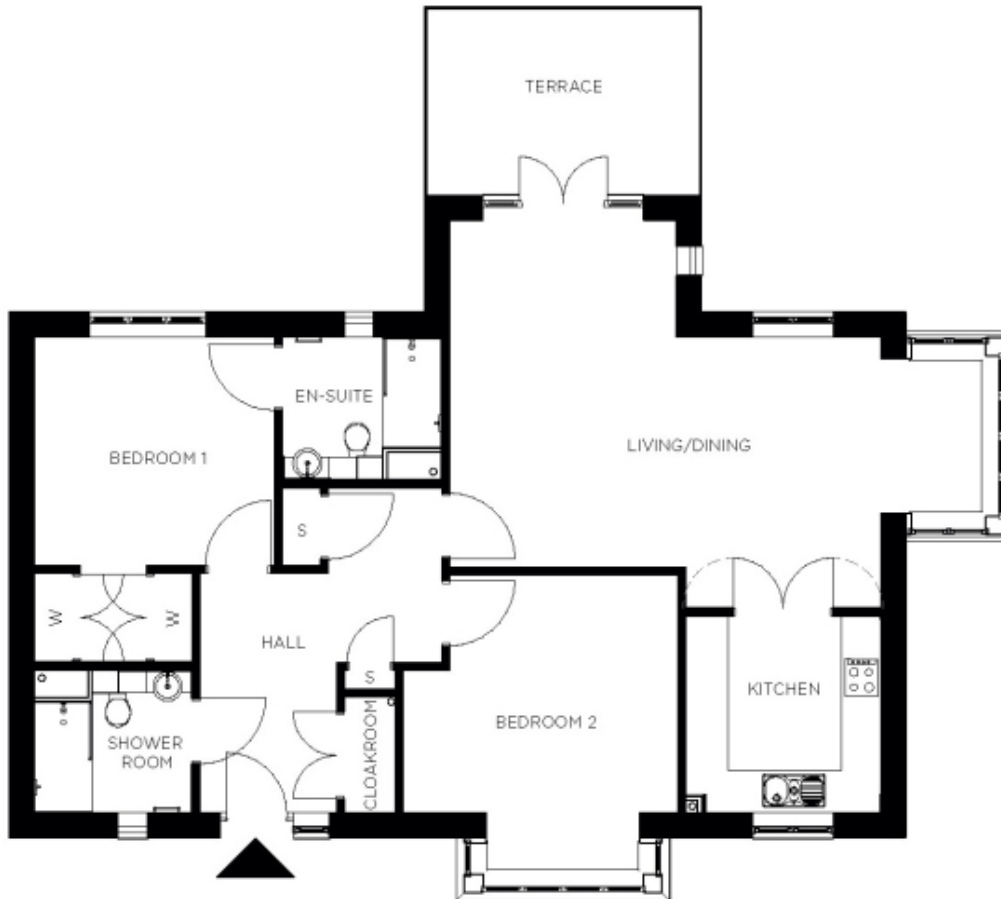


106 Hylde Manor



Price: £725,000*, Ground floor

This beautiful apartment features a versatile open-plan living space adjacent to the fully equipped kitchen. An en suite master bedroom is supplemented by a second double bedroom and separate bathroom, giving the flexibility to entertain guests all year round. An entrance with ample storage flows into an interior complete with the very latest fixtures, fittings and appliances.

* other charges apply

Internal measurements: 1,165sq ft

Living	27' 3" x 17' 7"	8,300 x 5,336mm
Kitchen	10' 0" x 10' 0"	3,031 x 3,044mm
Hallway	12' 2" x 8' 11"	3,703 x 2,694mm
Bedroom 1	12' 0" x 11' 7"	3,647 x 3,530mm
Wardrobe	2' 1" x 4' 7"	614 x 1,375mm
Wardrobe	2' 1" x 4' 7"	614 x 1,375mm
Ensuite 1	8' 2" x 7' 3"	2,486 x 2,198mm
Bedroom 2	13' 10" x 15' 3"	4,212 x 4,637mm
Shower	8' 1" x 7' 3"	2,450 x 2,198mm
Store	2' 2" x 4' 0"	644 x 1,202mm
Patio	14' 1" x 9' 6"	4,291 x 2,894mm



PLEASE NOTE: Images are for illustrative purposes only. Rooms shown may not be representative of this property.