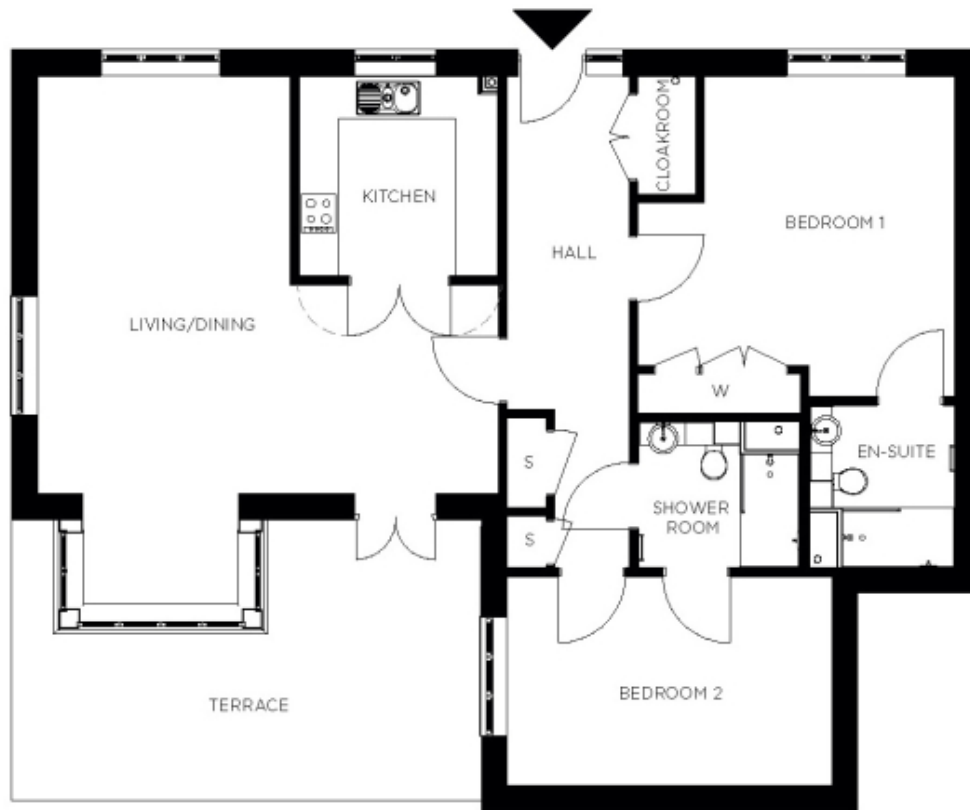


107 Hylde Manor



Price: £POA*, Ground floor

This attractive apartment combines spacious proportions with practical design. Two generous double bedrooms (with master en suite) are linked by a hallway with ample storage. A large open-plan dining area adjoins the fully equipped kitchen. The second bedroom and separate bathroom make this apartment perfect for accommodating family and friends.

* other charges apply

Internal measurements: 1,245sq ft

Living	22' 11" x 26' 2"	6,969 x 7,960mm
Kitchen	9' 11" x 10' 0"	3,010 x 3,044mm
Hallway	5' 10" x 24' 5"	1,778 x 7,437mm
Bedroom 1	15' 9" x 16' 0"	4,786 x 4,859mm
Wardrobe	8' 2" x 2' 0"	2,474 x 600mm
Ensuite 1	7' 3" x 8' 1"	2,198 x 2,450mm
Bedroom 2	16' 3" x 10' 5"	4,928 x 3,152mm
Shower	8' 1" x 7' 3"	2,450 x 2,200mm
Store	2' 0" x 4' 6"	595 x 1,357mm
Store	2' 0" x 2' 8"	595 x 800mm
Patio	20' 10" x 13' 2"	6,335 x 4,013mm



PLEASE NOTE: Images are for illustrative purposes only. Rooms shown may not be representative of this property.