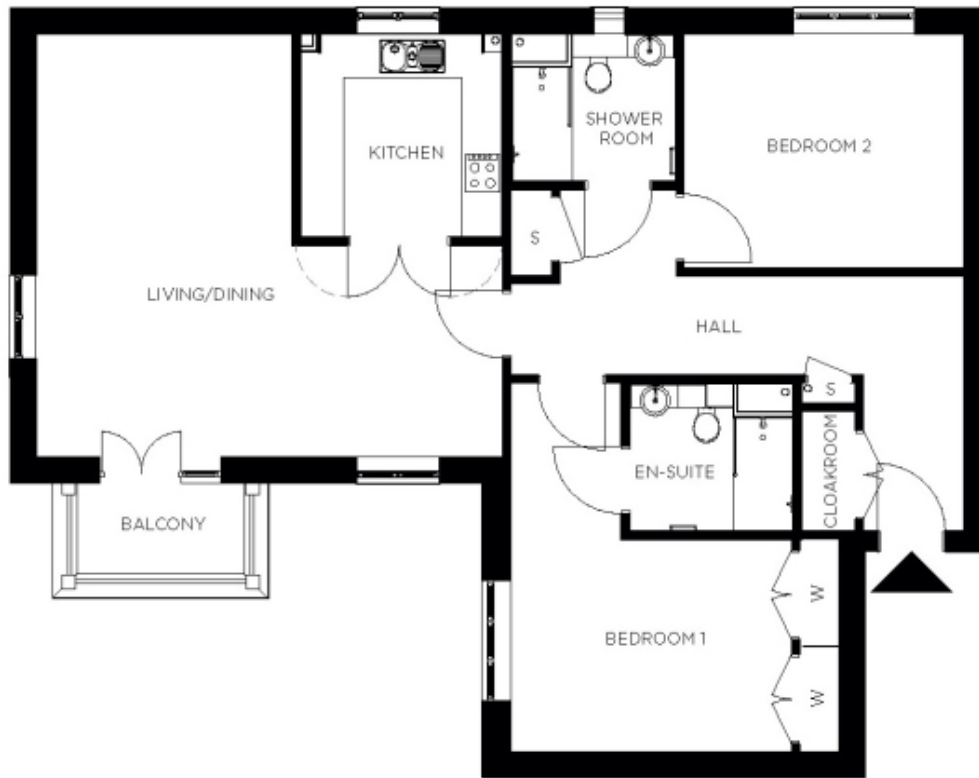


110 Hylde Manor



Price: £POA*, First floor

This attractive apartment combines spacious proportions with practical design. Two generous double bedrooms (with master en suite) are linked by a hallway with ample storage. A large open-plan dining area adjoins the fully equipped kitchen. The second bedroom and separate bathroom make this apartment perfect for accommodating family and friends.

* other charges apply

Internal measurements: 1,201sq ft

Living	22' 11" x 20' 10"	6,969 x 6,342mm
Kitchen	9' 11" x 10' 0"	3,010 x 3,042mm
Hallway	22' 0" x 12' 6"	6,692 x 3,806mm
Bedroom 1	13' 10" x 10' 5"	4,209 x 3,158mm
Wardrobe	2' 0" x 10' 5"	600 x 3,158mm
Ensuite 1	8' 1" x 7' 3"	2,448 x 2,198mm
Bedroom 2	13' 6" x 11' 7"	4,104 x 3,512mm
Shower	8' 1" x 7' 3"	2,448 x 2,200mm
Store	2' 0" x 4' 3"	600 x 1,293mm
Balcony	8' 7" x 4' 3"	2,608 x 1,283mm



PLEASE NOTE: Images are for illustrative purposes only. Rooms shown may not be representative of this property.