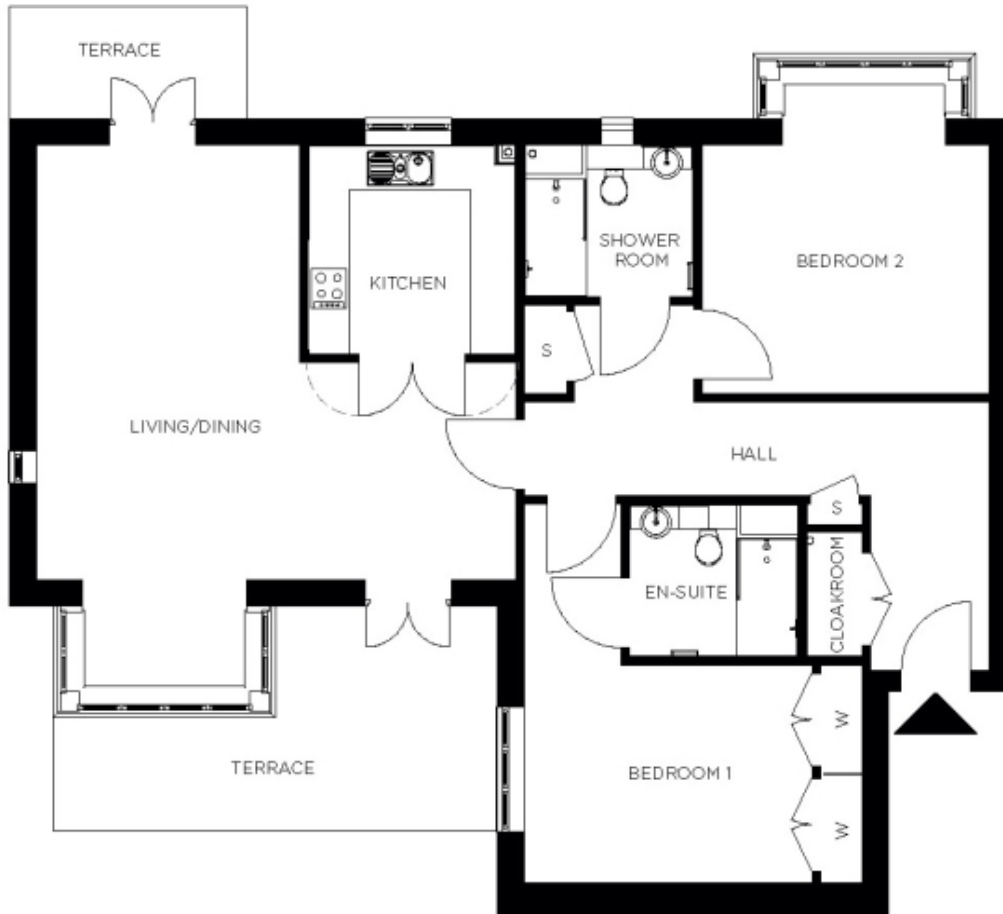


112 Cecilia Court



Price: £797,000*, Ground floor

This attractive apartment combines spacious proportions with practical design. Two generous double bedrooms (with master en suite) are linked by a hallway with ample storage. A large open-plan dining area adjoins the fully equipped kitchen. The second bedroom and separate bathroom make this apartment perfect for accommodating family and friends.

* other charges apply

Internal measurements: 1,297sq ft

Living	22' 11" x 26' 2"	6,971 x 7,959mm
Kitchen	9' 11" x 10' 0"	3,010 x 3,047mm
Hallway	22' 4" x 9' 2"	6,797 x 2,771mm
Bedroom 1	15' 4" x 10' 5"	4,661 x 3,154mm
Wardrobe	2' 0" x 10' 5"	600 x 3,154mm
Ensuite 1	8' 1" x 7' 3"	2,450 x 2,200mm
Bedroom 2	13' 10" x 15' 0"	4,206 x 4,560mm
Shower	8' 1" x 7' 4"	2,450 x 2,214mm
Store	2' 0" x 4' 3"	600 x 1,285mm
Patio	13' 6" x 5' 0"	4,114 x 1,524mm



PLEASE NOTE: Images are for illustrative purposes only. Rooms shown may not be representative of this property.