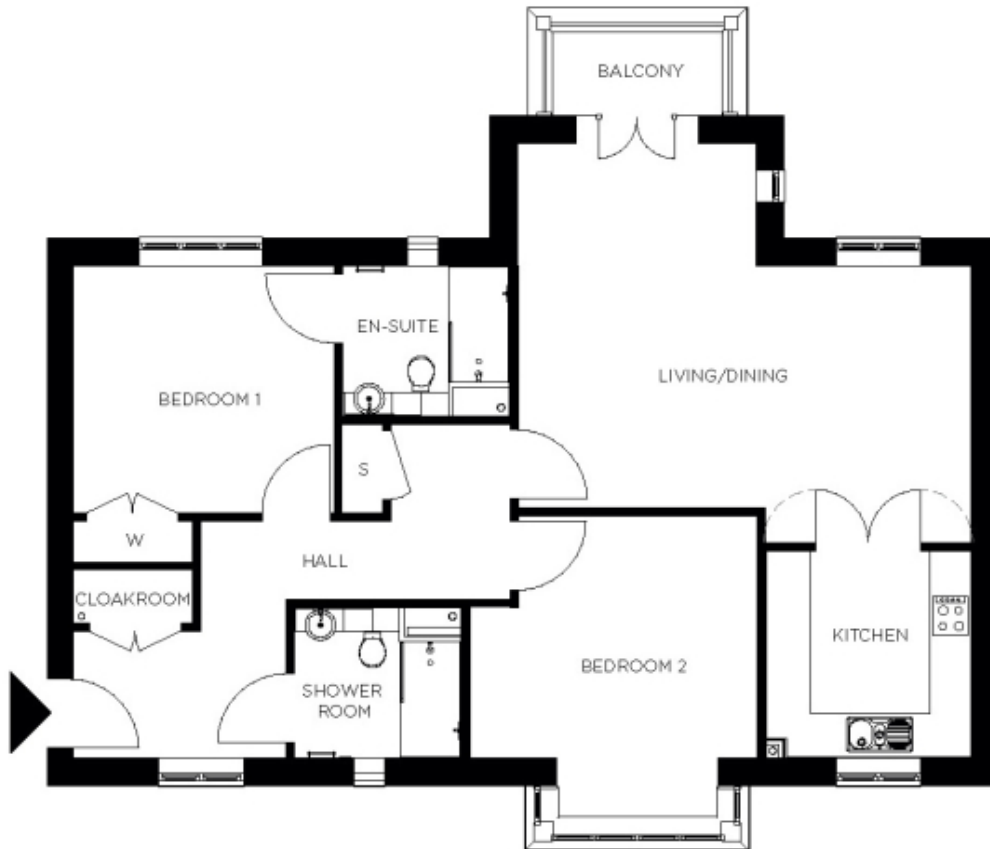


116 Cecilia Court



Price: £699,000*, First floor

This beautiful apartment features a versatile open-plan living space adjacent to the fully equipped kitchen. An en suite master bedroom is supplemented by a second double bedroom and separate bathroom, giving the flexibility to entertain guests all year round. An entrance with ample storage flows into an interior complete with the very latest fixtures, fittings and appliances.

* other charges apply

Internal measurements: 1,118sq ft

Living	22' 0" x 17' 8"	6,685 x 5,365mm
Kitchen	9' 11" x 10' 0"	3,010 x 3,047mm
Hallway	14' 11" x 11' 6"	4,540 x 3,491mm
Bedroom 1	12' 6" x 12' 3"	3,808 x 3,716mm
Wardrobe	5' 9" x 2' 0"	1,742 x 600mm
Ensuite 1	8' 1" x 7' 3"	2,450 x 2,207mm
Bedroom 2	14' 0" x 14' 10"	4,263 x 4,509mm
Shower	8' 0" x 7' 3"	2,434 x 2,200mm
Store	2' 0" x 4' 8"	600 x 1,419mm
Balcony	8' 7" x 4' 4"	2,608 x 1,301mm



PLEASE NOTE: Images are for illustrative purposes only. Rooms shown may not be representative of this property.