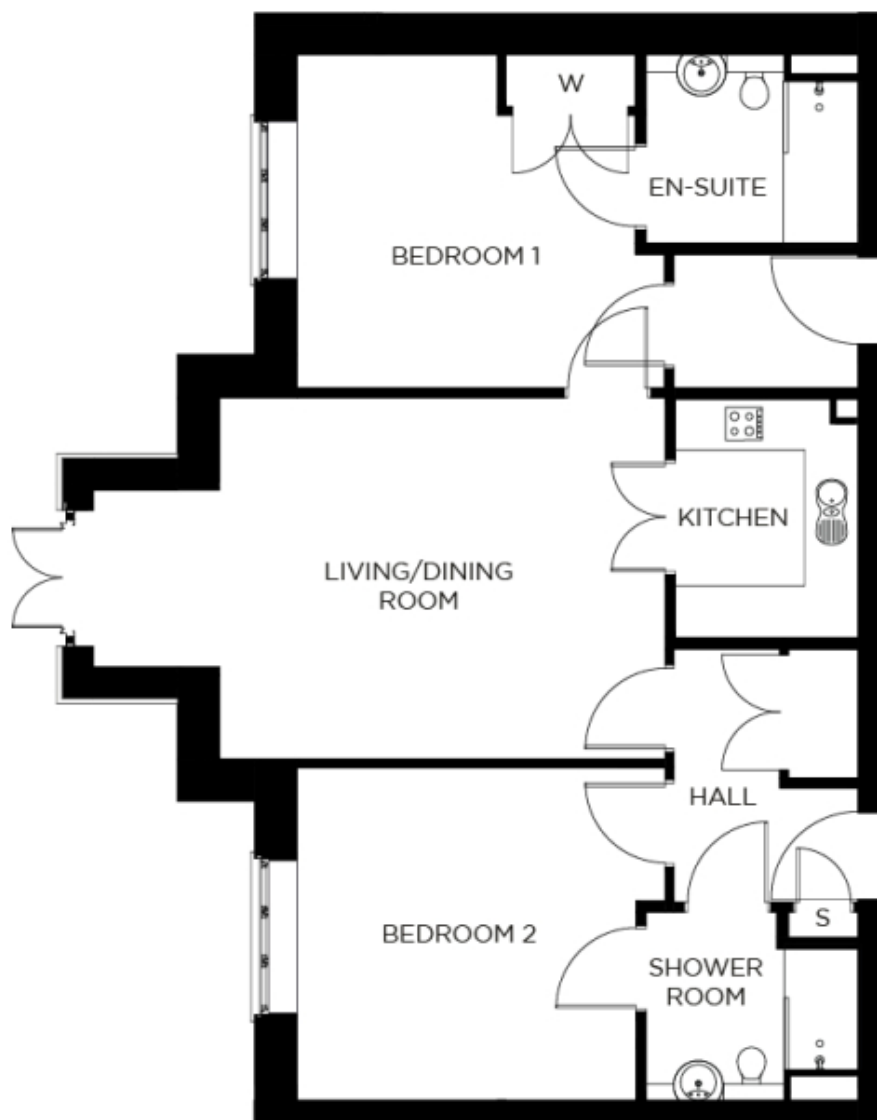


6 Burchmore House

A beautiful modern home



Price: £POA*, Ground floor

Our spacious two-bedroom retirement living apartments offer the perfect balance of style and function, centrally located to ensure easy access to all village facilities.

* other charges apply

Internal measurements: 920sq ft

Kitchen	9' 2" x 7' 0"	2,780 x 2,120mm
Living/Dining Room	21' 9" x 13' 9"	6,610 x 4,190mm
Bedroom 1	14' 0" x 12' 8"	4,250 x 3,860mm
Ensuite	8' 1" x 7' 2"	2,450 x 2,180mm
Bedroom 2	14' 0" x 12' 8"	4,250 x 3,850mm
Shower room	8' 1" x 7' 2"	2,450 x 2,180mm



PLEASE NOTE: Images are for illustrative purposes only, rooms shown may not be representative of this property.